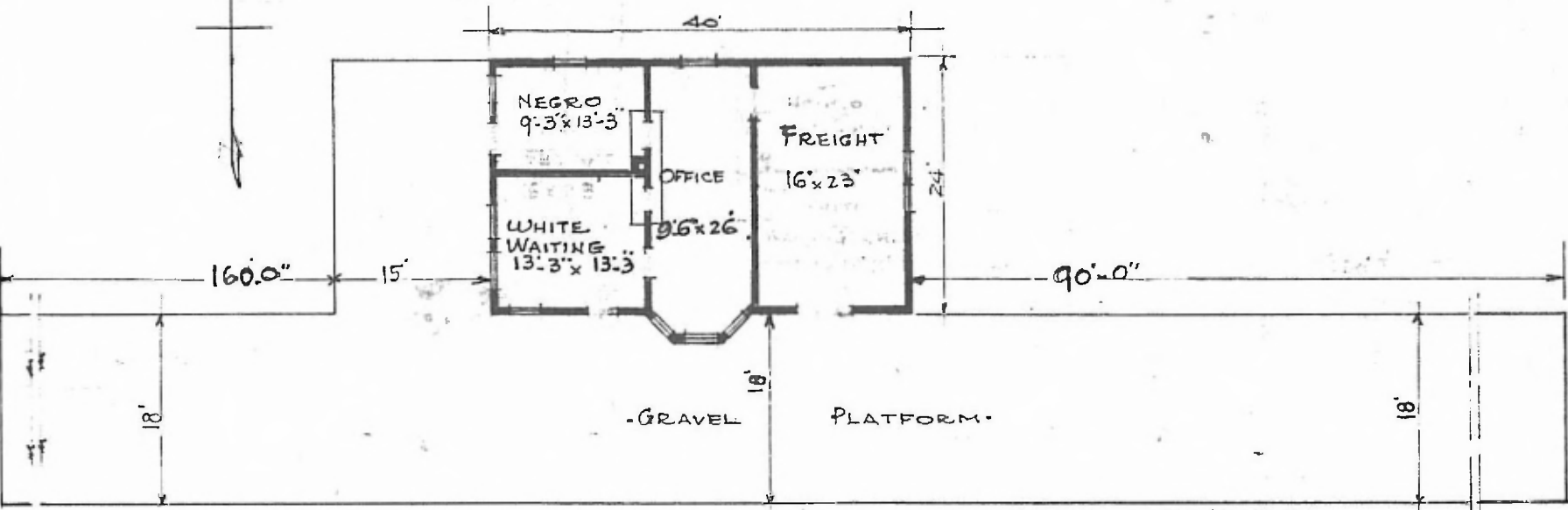


ERECTED. 1910.
 TYPE. FRAME.
 FOUNDATION. PILE HEADS.
 WALLS. 2x6"
 ROOF { TYPE. HIP SHINGLES.
 PITCH. 1/3
 HEATING. STOVES.

FLOOR. 2 1/4" MAPLE.
 FINISH { INSIDE. 3/4" B.D. CEILING.
 OUTSIDE. 1/2" G. COVE DROP.
 CEILING HEIGHT. 11'4"
 LIGHTING. LAMPS.
 SANITARY FACILITIES. OUTSIDE TOILET.



FLOOR PLAN.
 SCALE. 1/16" = 1'0"

DIV. CENTRAL
 SUB. DIV. ARKINDA
 STA. NO. W-618

COMBINATION STATION AT
 BOKHOMA OKLA.