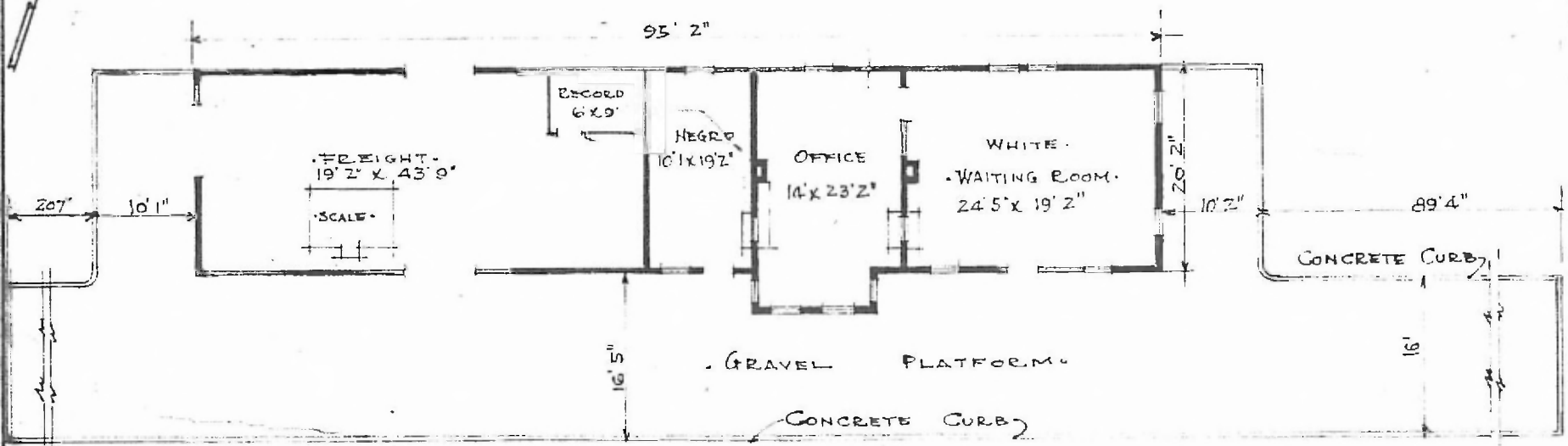


ERECTED. 1902.
 TYPE. FRAME
 FOUNDATION. PILE HEADS.
 WALLS. 2' X 6"
 ROOF { TYPE. GABLE SHINGLE.
 PITCH. 1/3
 HEATING. STOVES.

FLOOR. 3/4 X 3 1/4" Y. PINE.
 FINISH { INSIDE. V. JOINT
 OUTSIDE. BOARD & BATS
 CEILING HEIGHT. 13' 3"
 LIGHTING. LAMPS.
 SANITARY FACILITIES. OUTSIDE TOILET.



FLOOR PLAN.
 SCALE - 1/16" = 1' 0"

DIV. CENTRAL
 SUB. DIV. ARMORE
 STA. NO. V-580

COMBINATION STATION AT
 BOSWELL OKLA.