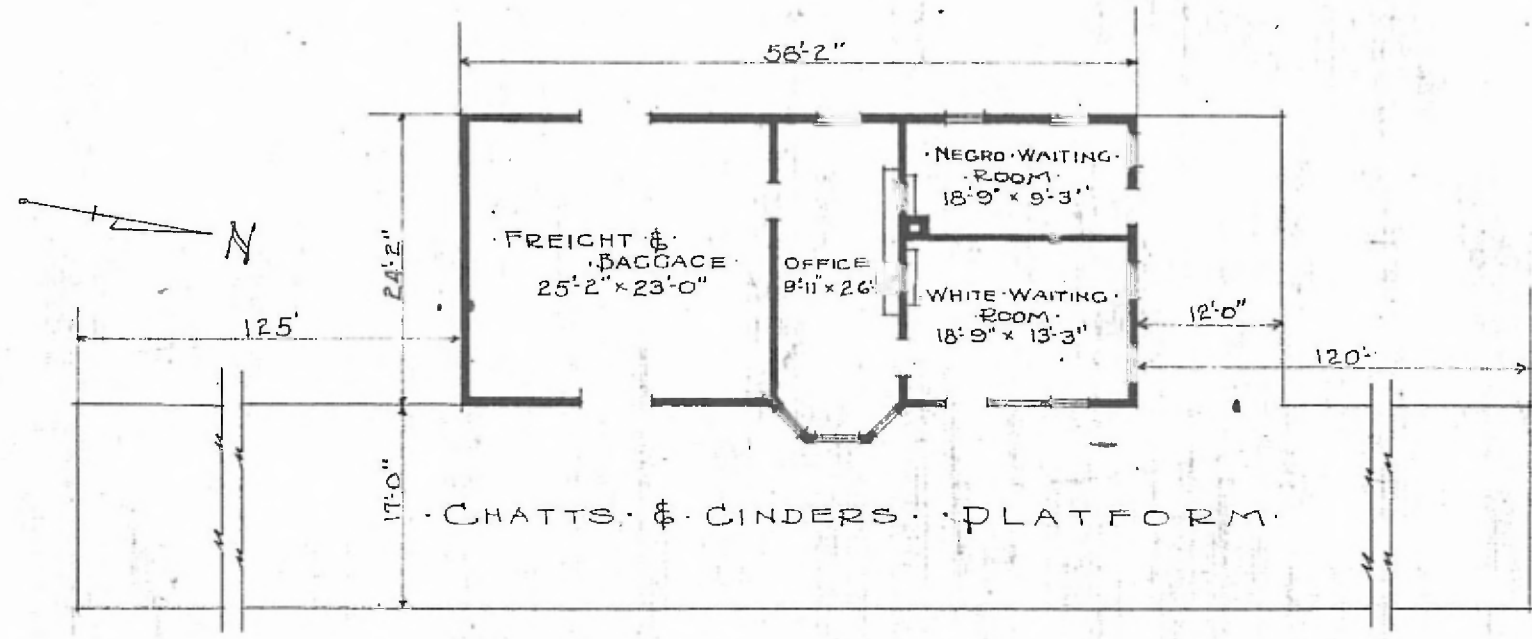


·ERECTED 1909
 ·TYPE ·FRAME
 ·FOUNDATION CONCRETE
 ·WALLS 2"x6"
 ·ROOF TYPE: HIP, SHINGLES
 ·HEATING PITCH: STOVES

·FLOOR FINISH { INSIDE ·
 { OUTSIDE ·
 ·CEILING HEIGHT
 ·LIGHTING
 ·SANITARY FACILITIES

DIV. SOUTHWESTERN
 SUB. DIV. CHEROKEE
 2 1/4" MAPLE 2 1/4" x 3 1/4" M. & D.
 DROP SIDING
 11'-3"
 OIL LAMPS
 OUTSIDE TOILETS
 STA. No G-433

(57)



·FLOOR PLAN ·
 SCALE 1/16" = 1'-0"

·COMBINATION STATION ·
 ·BOWDEN · OKLA.

JULY 3, 1916