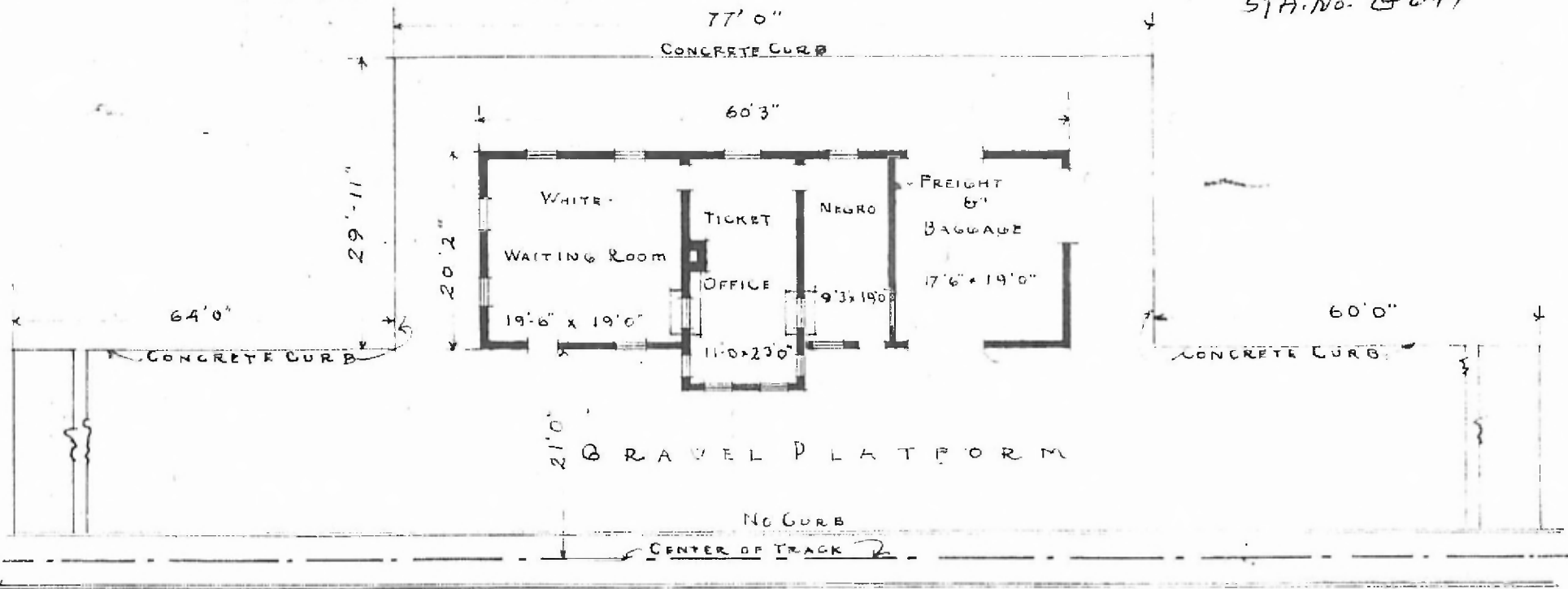


ERECTED:	1903.	FLOORS:	3/4 x 3/4 YELLOW-PINE.
TYPE:	FRAME.	FINISH {	3/4 x 3/4 BEADED-CEILING.
FOUNDATION:	PILE-HEADS.	INSIDE.	BOARDS & BATTIS.
ROOF. {	GABLE-SHINGLE.	OUTSIDE.	12'3" FREIGHT-13'2"
		CEILING-HEIGHT.	OIL LAMPS.
WALLS:	APPROX. 1/3.	LIGHTING.	OUTSIDE.
HEATING:	2x6 STUD.	JANITARY-FACILITIES:	
	STOUES.		

DIV. SOUTHWESTERN
 SUB. DIV. CHICKASHA
 STA. NO. 6644



FLOOR PLAN
 SCALE 1/16" = 1'-0"

PASSENGER STATION AT
 CACHE OKLA.



NOVEMBER 20 1916