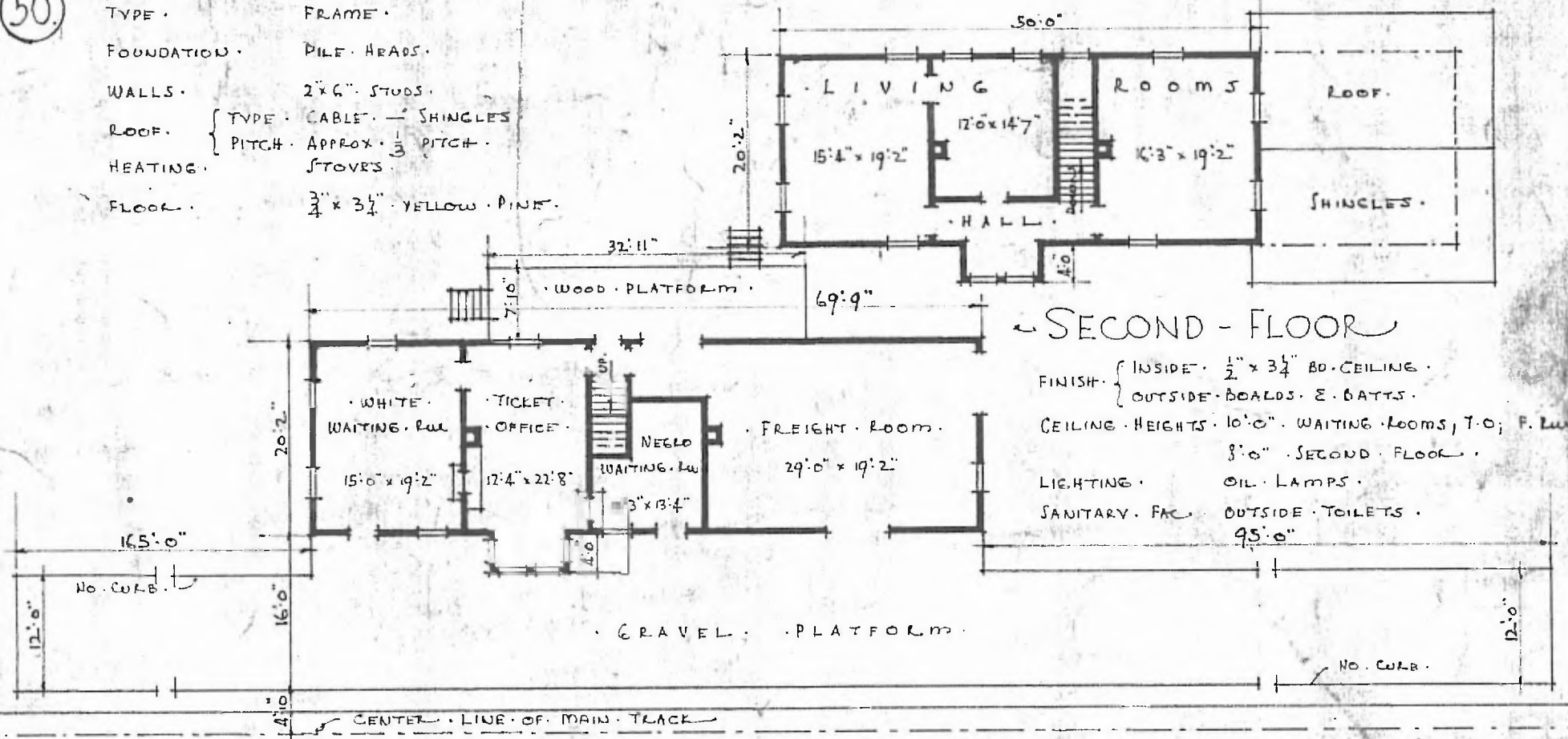


50.

ERECTED 1887.
 TYPE FRAME.
 FOUNDATION PILE HEADS.
 WALLS 2x6" STUDS.
 ROOF { TYPE CABLE SHINGLES
 PITCH APPROX. 1/3 PITCH.
 HEATING STOVES.
 FLOOR 3" x 3 1/2" YELLOW PINE.



SECOND - FLOOR

FINISH { INSIDE 1/2" x 3 1/2" BO. CEILING.
 OUTSIDE BOARDS & GUTTS.
 CEILING HEIGHTS 10'0" WAITING ROOMS, T.O.; F. L.W.
 8'0" SECOND FLOOR.
 LIGHTING OIL LAMPS.
 SANITARY FAC. OUTSIDE TOILETS.
 45'0"

FLOOR PLAN
 SCALE 1/16" = 1'0"

DIV. CENTRAL
 SUB. DIV. ARTHUR
 STA. NO. 437



JULY. 10. 1915.

COMBINATION - STATION - AT
 CAMERON - OKLAHOMA