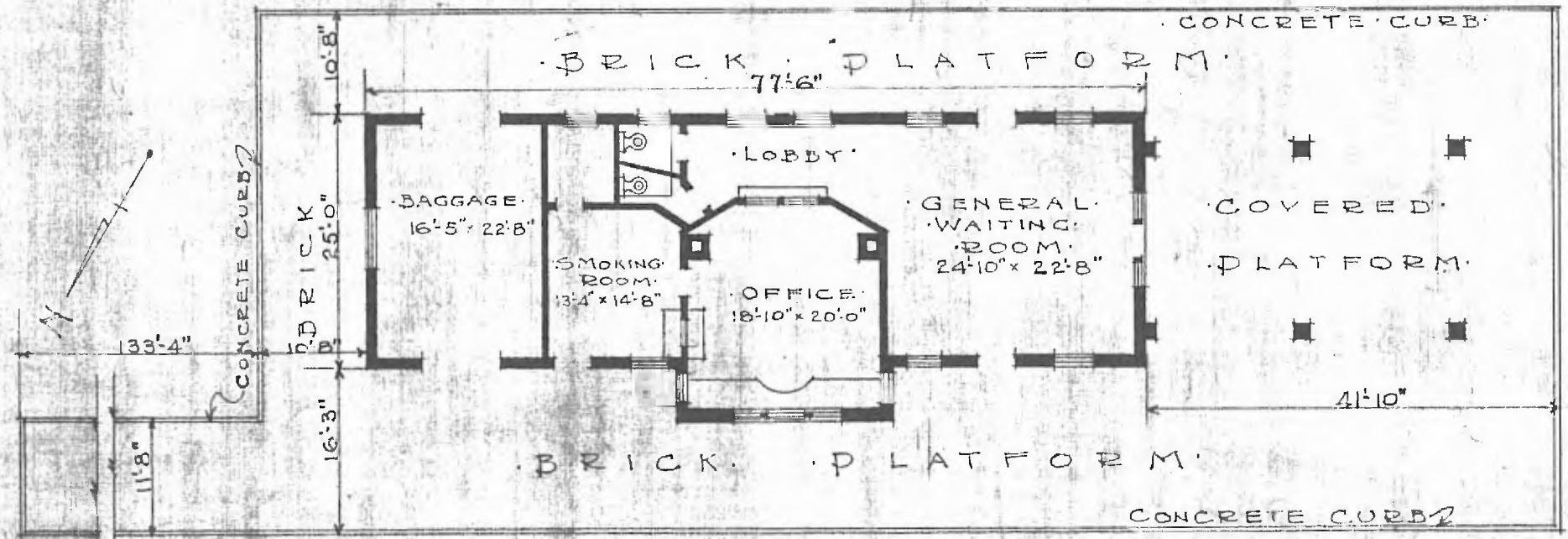


74

ERECTED: 1902  
 TYPE: BRICK  
 FOUNDATION: ?  
 WALLS: 13"  
 ROOF: (TYPE: HIP, TILE)  
 DITCH: 1/3  
 HEATING: STOVES

FLOOR: 3/4 x 3/4" Y.P.  
 FINISH: (INSIDE: PLASTERED, OUTSIDE: PRESSED BRICK)  
 CEILING HEIGHT: 12'-11"  
 LIGHTING: ELECTRIC  
 SANITARY FACILITIES: INSIDE TOILETS

DIV. SOUTHWESTERN  
 SUB. DIV. CHICKASHA  
 STP. No. G 581



FLOOR PLAN  
 SCALE 1/16" = 1'-0"

PASSENGER STATION  
 CHICKASHA OKLA.

NOV. 29, 1916.