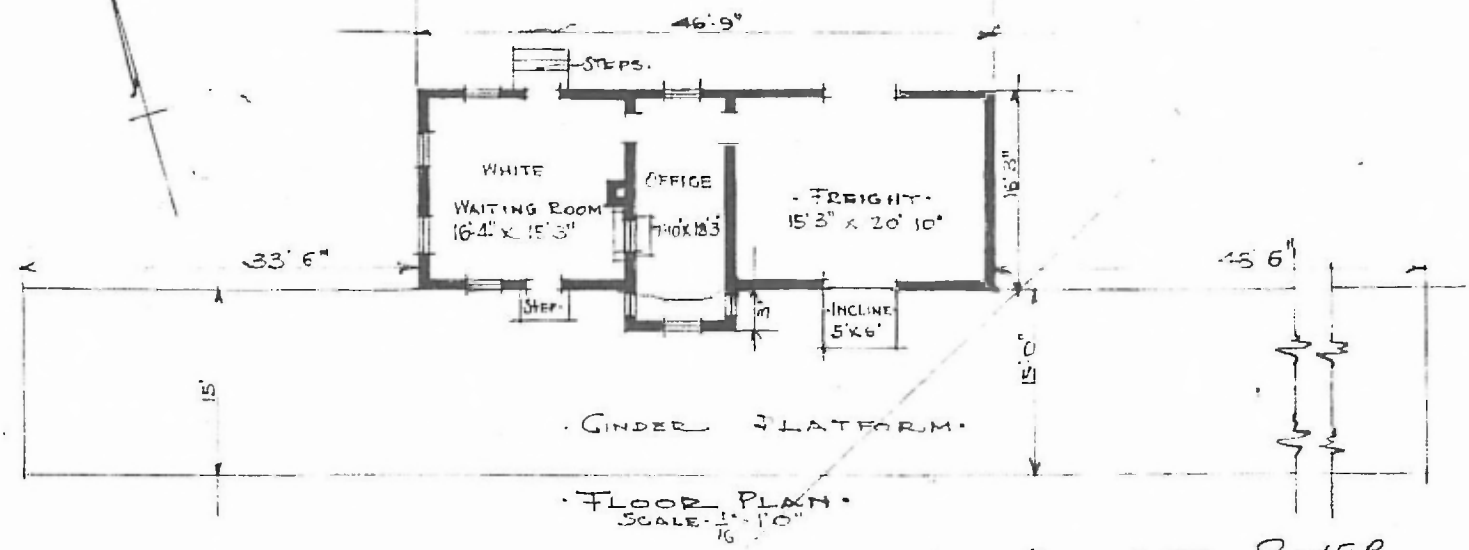


ERECTED. 1900.
 TYPE. FRAME.
 FOUNDATION. PILE HEADS.
 WALLS. 2"x4"
 ROOF { TYPE. HIP. SHINGLES.
 PITCH 1/3
 HEATING. STOVES.

FLOOR. 2"x3 1/4" Y. PINE.
 FINISH { INSIDE 1/2"x3 1/4" BD. CEILING.
 OUTSIDE. BOARD & BATTIS.
 CEILING HEIGHT. 11' 5 1/2" FRT. RM. 9'7"
 LIGHTING. LAMPS.
 SANITARY FACILITIES. OUTSIDE TOILET.



SW - DIV. RED RIVER
 SUB. DIV. MUSKOGEE
 STA. No. Y-395

COMBINATION STATION AT
 CHRISTIE OKLA.

AUG. 26. 1915.