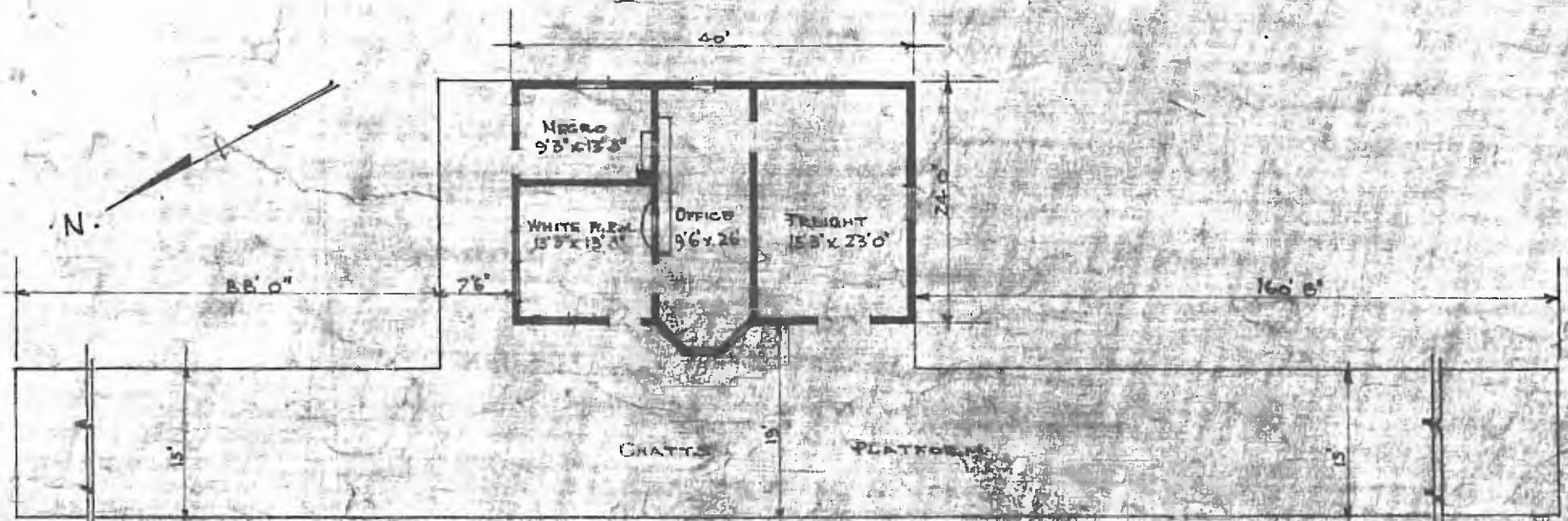


ERECTED 1913.  
 TYPE. FRAME.  
 FOUNDATION. CONCRETE.  
 WALLS. 2"KG"  
 ROOF { TYPE. HIP.  
       PITCH 1/3  
 HEATING. STOVES.

FLOOR. MAPLE.  
 FINISH { INSIDE. VJOINT CEILING.  
        OUTSIDE. DROP SIDING #112.  
 CEILING HEIGHT. 11'4"  
 LIGHTING. LAMPS.  
 SANITARY FACILITIES. OUTSIDE TOILETS.



FLOOR PLAN  
 SCALE 1" = 10'

DIV. CENTRAL  
 DIV. ARCH. & R.  
 STA. No. 547

COMBINATION STATION AT  
 CLAYTON OKLA.

MAY 28 1913