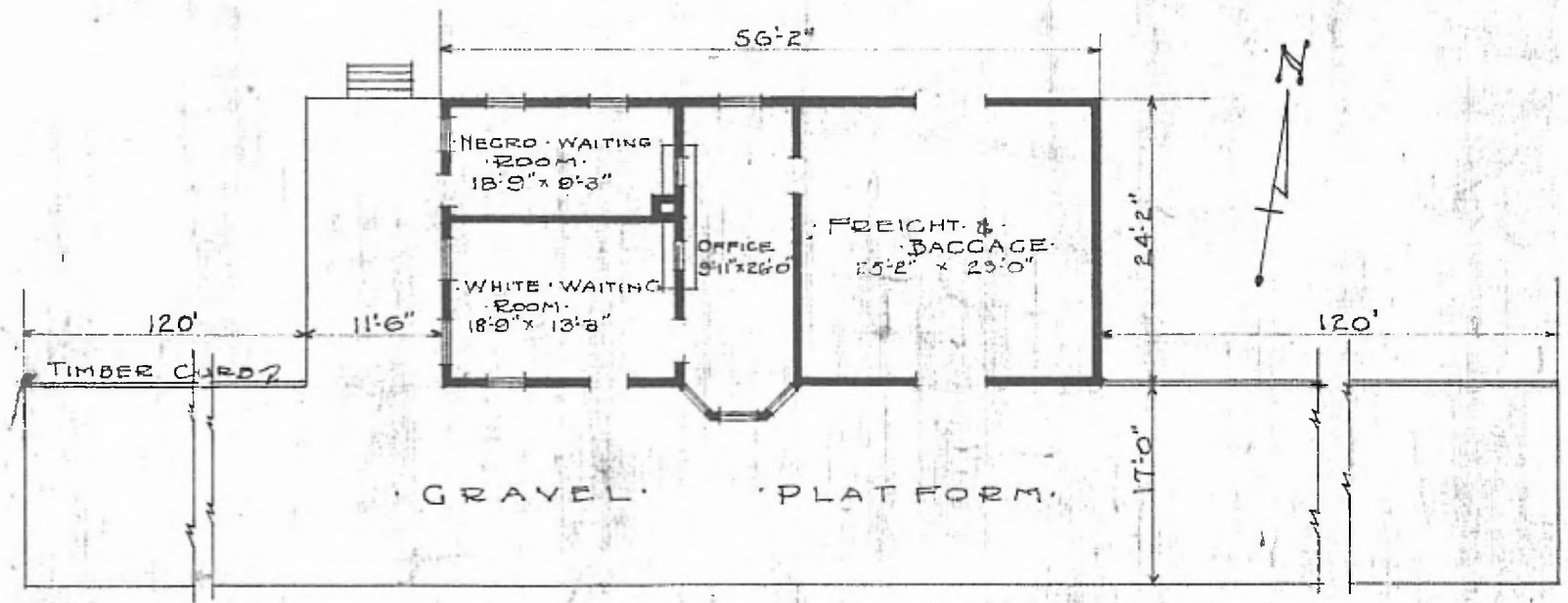


- ERECTED: 1908
- TYPE: FRAME
- FOUNDATION: PILE HEADS
- WALLS: 2"x6"
- ROOF: (TYPE: HIP, SHINGLES; PITCH: 3/4)
- HEATING: STOVES

- FLOOR: 3/4" x 3/4" MAPLE
- FINISH: (INSIDE: 3/4" x 3/4" M. & B.; OUTSIDE: DROP SIDING)
- CEILING HEIGHT: 11'-3"
- LIGHTING: OIL LAMPS
- SANITARY FACILITIES: OUTSIDE TOILETS

DIV. SOUTHWESTERN
503. OKLAHOMA
ST. A. No. 6485

63



FLOOR PLAN
SCALE 1/16" = 1'-0"

COMBINATION STATION
DAVENPORT OKLA.

JULY 17, 1916.