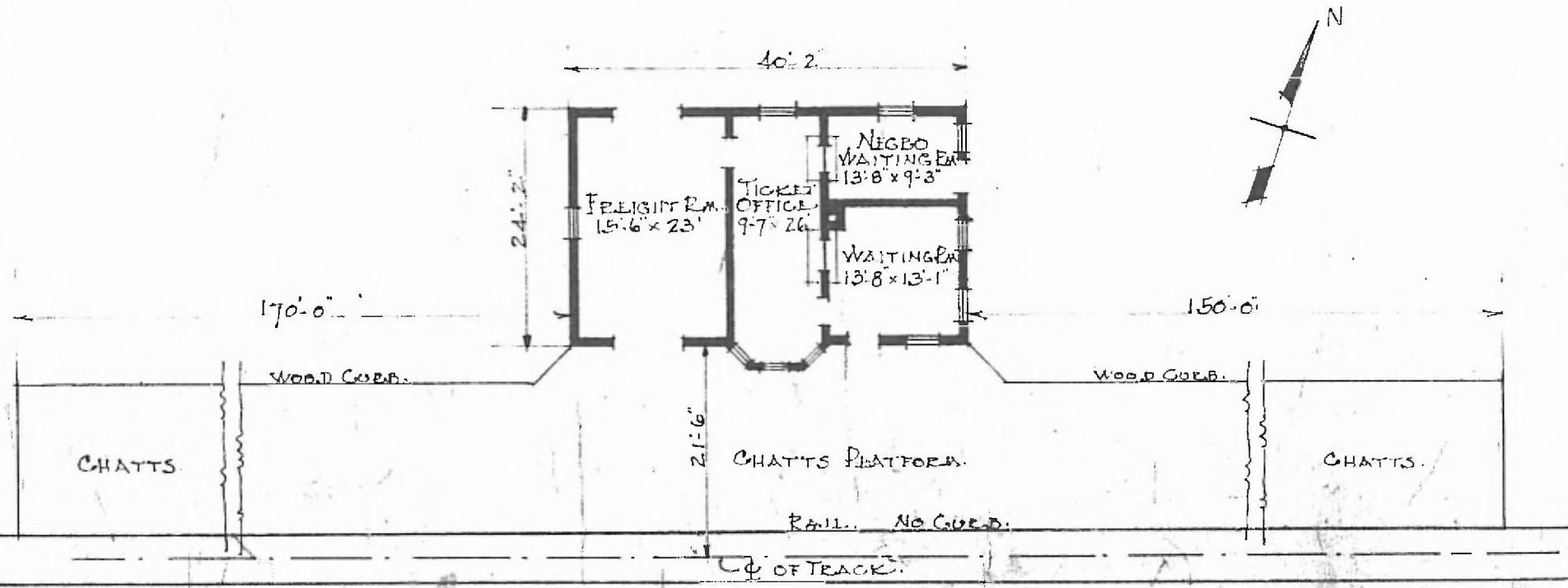


ERECTED 1910  
 TYPE. FRAME  
 FOUNDATION. CONCRETE  
 WALLS 2"x6" STUD  
 ROOF. { TYPE. SHINGLE GABLE  
 PITCH APPROX 1/2  
 HEATING STOVES

FLOOR 2 1/4" MAPLE  
 FINISH { INSIDE. V. JOINT CEILING  
 OUTSIDE. BOXING AND BATTENS  
 CEILING HEIGHT 11'3" ; FREIGHT 11'3" OPEN.  
 LIGHTING OIL LAMPS.  
 SANITARY FACILITIES. OUTSIDE.

DIV. SOUTHWESTERN  
 SUB-DIV. CHEROKEE  
 STATION G-419

51



FLOOR PLAN.  
 SCALE 1/16" = 1'-0".

PASSENGER STATION AT  
 DAWSON. OKLA.

OCT. 5. 1915.