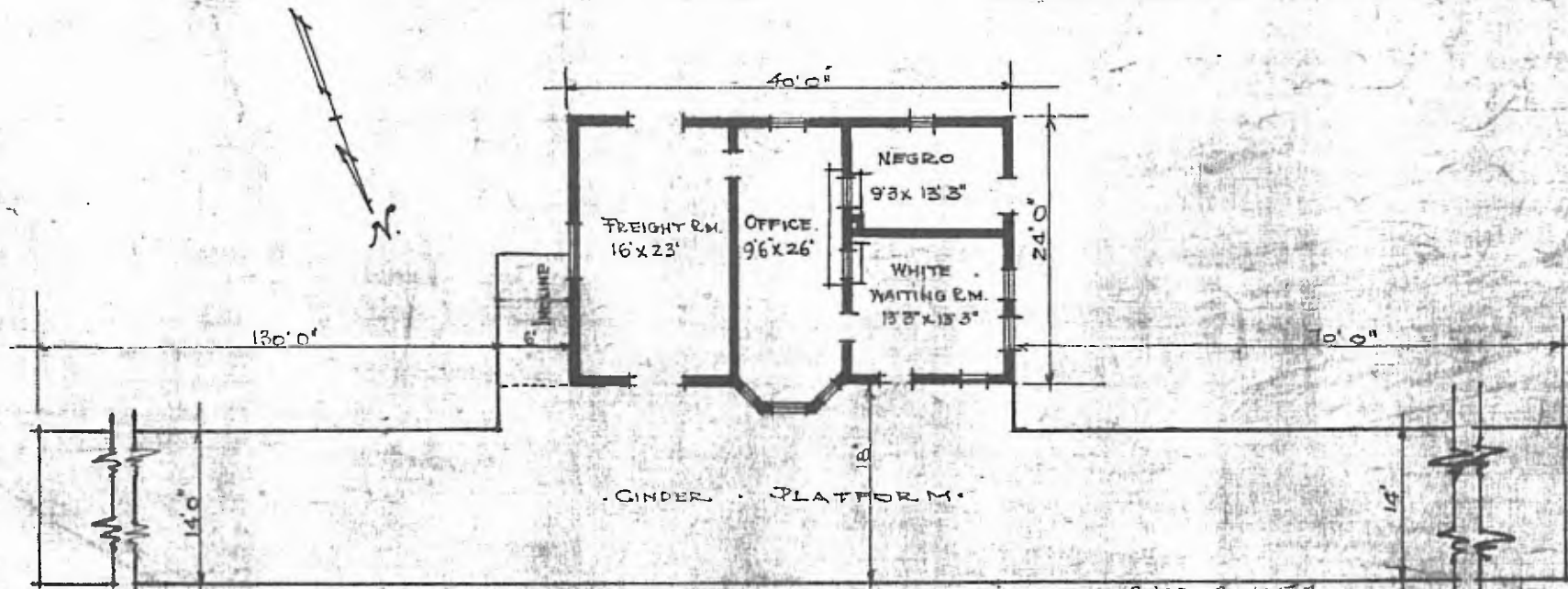


ERECTED. - 1911.
 TYPE. FRAME. STD #2.
 FOUNDATION. CONCRETE.
 WALLS. 2"x6"
 ROOF { TYPE. HIP. SHINGLES.
 PITCH. 1/3
 HEATING. STOVES.

FLOOR. 2 1/4" MAPLE.
 FINISH { INSIDE. 3/4" x 3 1/4" V. JOINT.
 OUTSIDE. 1"x6" DROP SIDING.
 CEILING HEIGHT. 11'4"
 LIGHTING. LAMPS.
 SANITARY FACILITIES. OUTSIDE TOILETS.



FLOOR PLAN. DIV. RED RIVER
 SCALE 1/16" = 1'0". SUB. DIV. MUSKOGEE
 STA. NO. Y482.

COMBINATION STATION AT
 ERAM OKLA.

Aug. 16. 1915.