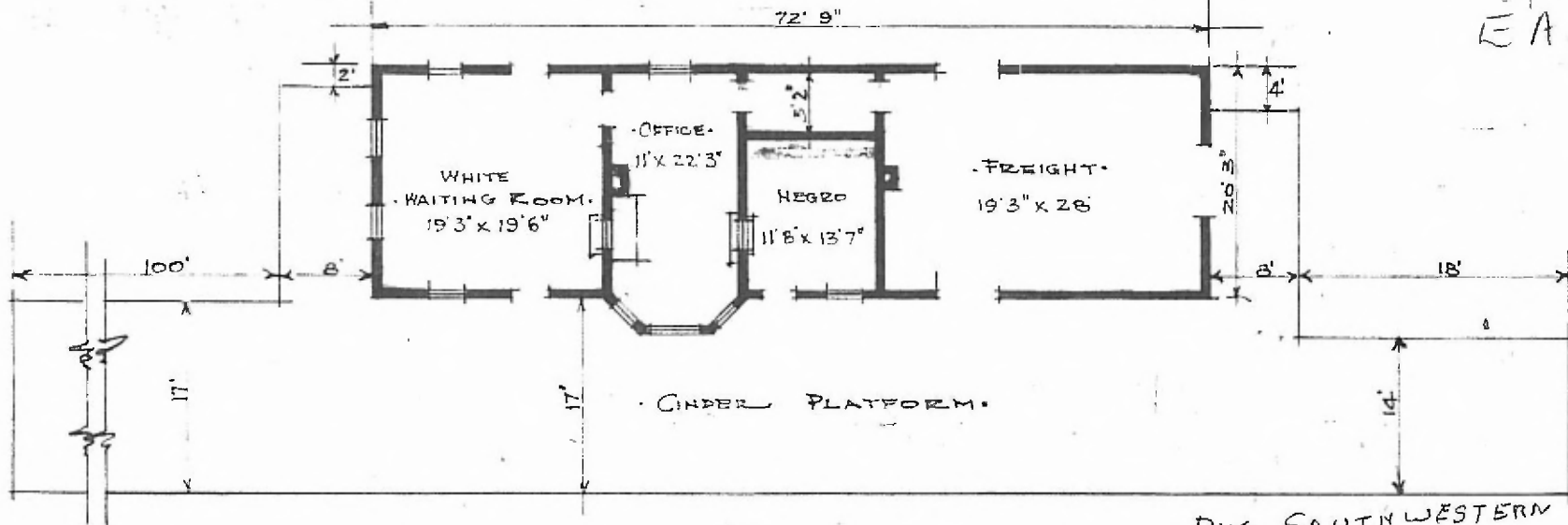


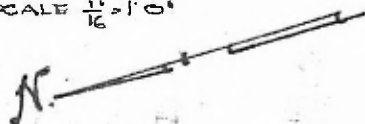
ERECTED. 1900.  
 TYPE. FRAME.  
 FOUNDATION. STONE.  
 WALLS. 2'x6"  
 ROOF { TYPE. HIP. SHINGLES.  
 PITCH 1/2.  
 HEATING. STOVES.

FLOOR. 3/4" x 3 1/2" Y. PINE.  
 FINISH { INSIDE. 3/4" x 3 1/2" Bd. CEILING.  
 OUTSIDE 1" x 6" LAP SIDING FETTER BOARD & BATTIS.  
 CEILING HEIGHT. 13' 10 1/2" FT. 11' 10 1/2"  
 LIGHTING. STOVES.  
 SANITARY FACILITIES. OUTSIDE TOILETS.

SW DIV  
 Creek Sub  
 EA 515



FLOOR PLAN.  
 SCALE 1/16" = 1' 0"



DIV. SOUTHWESTERN  
 SUB. DIV. CREEK  
 STA. NO. EA 515  
 ALSO LISTED AS  
 DIV. RED RIVER  
 SUB. DIV. MUSKOGEE  
 STA. NO. Y 448

COMBINATION STATION AT  
 FT. GIBSON, OKLA.

AUG. 17-1915.