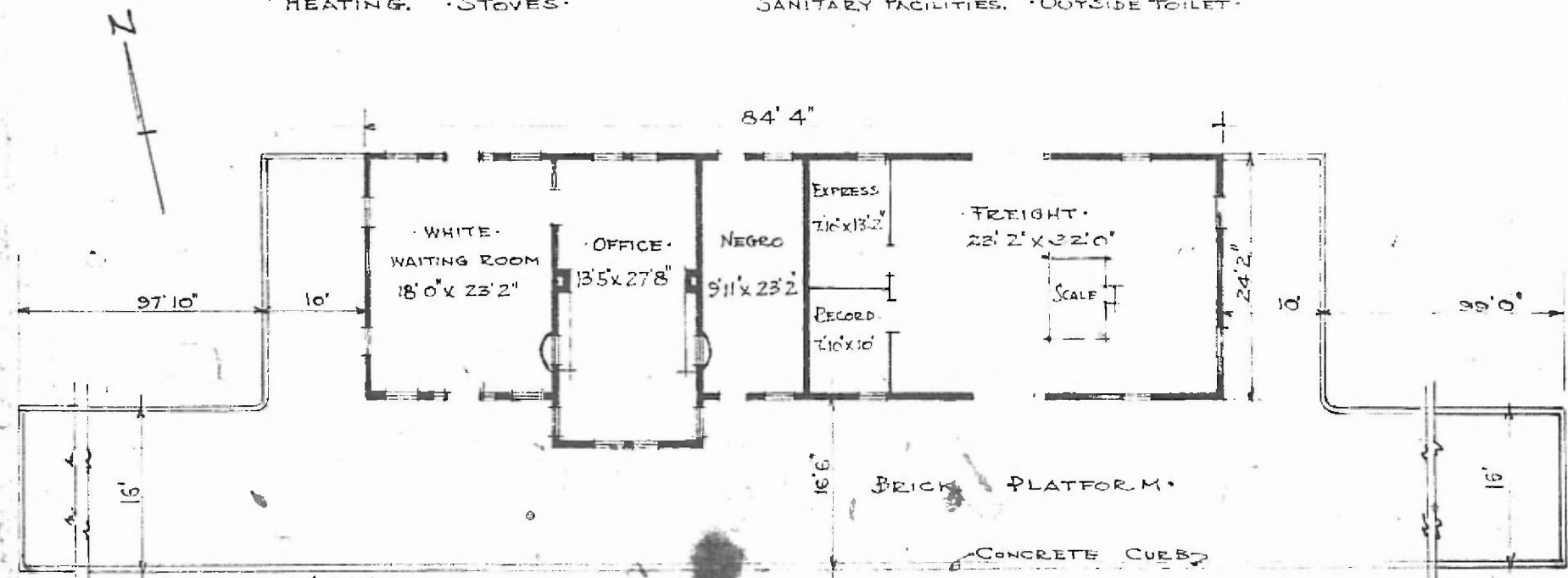


ERECTED. 1902. EXTD.  
 TYPE. FRAME.  
 FOUNDATION. CONCRETE.  
 WALLS. 2" x 6"  
 ROOF { TYPE. HIP. SHINGLES.  
 PITCH. 1/3  
 HEATING. STOVES.

FLOOR. 2 1/4" MAPLE.  
 FINISH { INSIDE. 3/4" x 3 1/4" V JOINT.  
 OUTSIDE. 1 x 6" Y P LAPSIDING.  
 CEILING HEIGHT. 12' 1 1/2"  
 LIGHTING. ELECTRIC. 2 WIRE 110 AC.  
 SANITARY FACILITIES. OUTSIDE TOILET.



DIV. CENTRAL  
 SUB. DIV. ARKINDA  
 STA. NO. W 574

FLOOR PLAN  
 SCALE 1/16" = 1'0"

COMBINATION STATION AT  
 FT TOWSON OKLA.

JUNE 14 1915