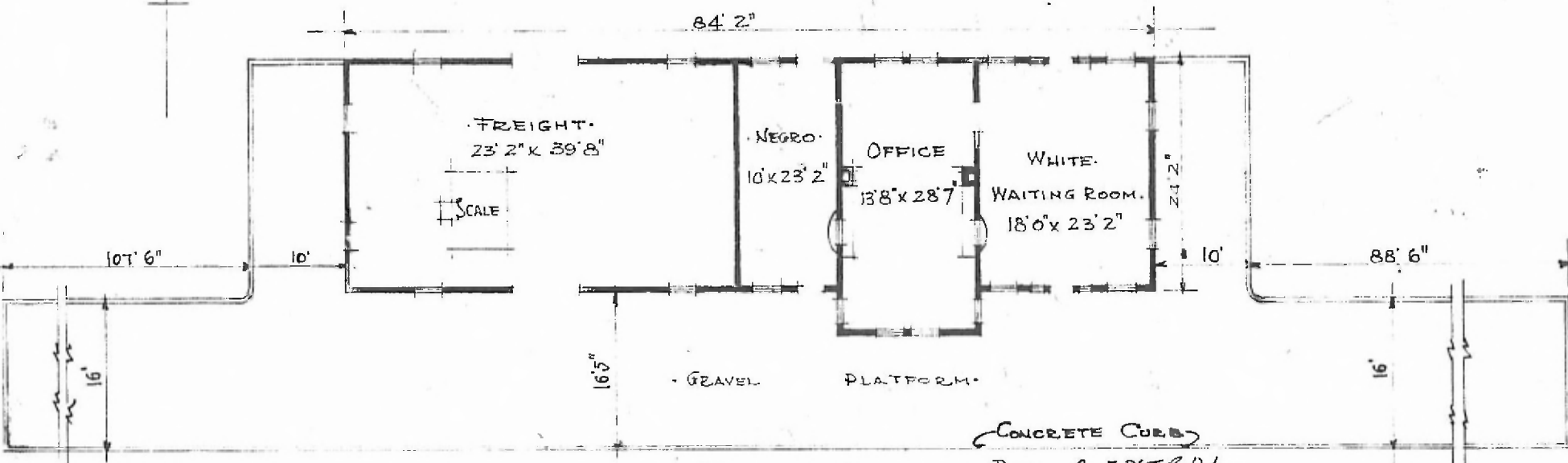


ERECTED. 1912.
 TYPE. FRAME.
 FOUNDATION. CONCRETE.
 WALLS. 2" X 6"
 ROOF { TYPE. HIP SHINGLES.
 PITCH 1/3
 HEATING. STOVE.

FLOOR. 2 1/4" MAPLE.
 FINISH { INSIDE. V. JOINT. CEILING.
 OUTSIDE. 1" X 6" GOVE DEEP SIDING.
 CEILING HEIGHT. 12' 1 1/2"
 LIGHTING. ELECTRIC. 2 WIRE 110 A.C.
 SANITARY FACILITIES. OUTSIDE TOILET.



FLOOR PLAN.
 SCALE. 1/16" = 1' 0"

CONCRETE CURB
 DIV. CENTRAL
 SUB. DIV. ARKINDA
 STA. No. W-594

COMBINATION STATION AT
 GARVIN OKLA.

JUNE. 15. 1915.