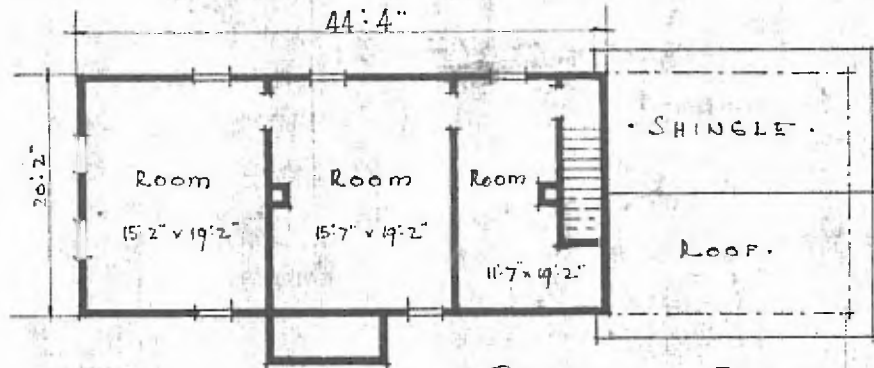


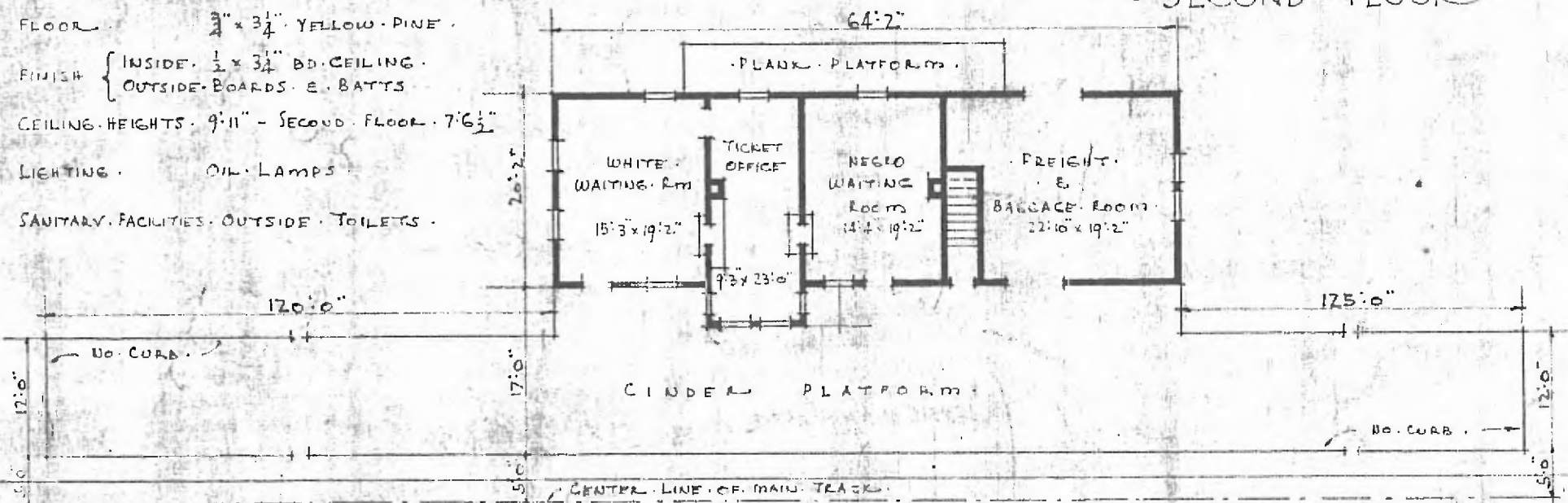
ERECTED · 1890.
 TYPE · FRAME ·
 FOUNDATION · PILE · HEADS ·
 WALLS · 2" x 4" · STUDS ·
 ROOF · { TYPE · GABLE - SHINGLES ·
 PITCH · APPROX. $\frac{1}{3}$ · PITCH ·
 HEATING · STOVES ·

FLOOR · $\frac{3}{4}$ " x $\frac{3}{4}$ " · YELLOW · PINE ·
 FINISH · { INSIDE · $\frac{1}{2}$ " x $\frac{3}{4}$ " BD. CEILING ·
 OUTSIDE · BOARDS · E. BATTIS ·
 CEILING HEIGHTS · 9' 11" - SECOND FLOOR · 7' 6 $\frac{1}{2}$ "
 LIGHTING · OIL · LAMPS ·
 SANITARY FACILITIES · OUTSIDE · TOILETS ·

77



~ SECOND - FLOOR ~



~ FLOOR PLAN ~
 SCALE $\frac{1}{16}$ " = 1'0"

DIV. CENTRAL
 SUB. DIV. ARTHUR
 STA. NO. 564
 ~ COMBINATION - STATION - AT ~
 ~ GRANT - OKLAHOMA ~



JUNE 12, 1915.