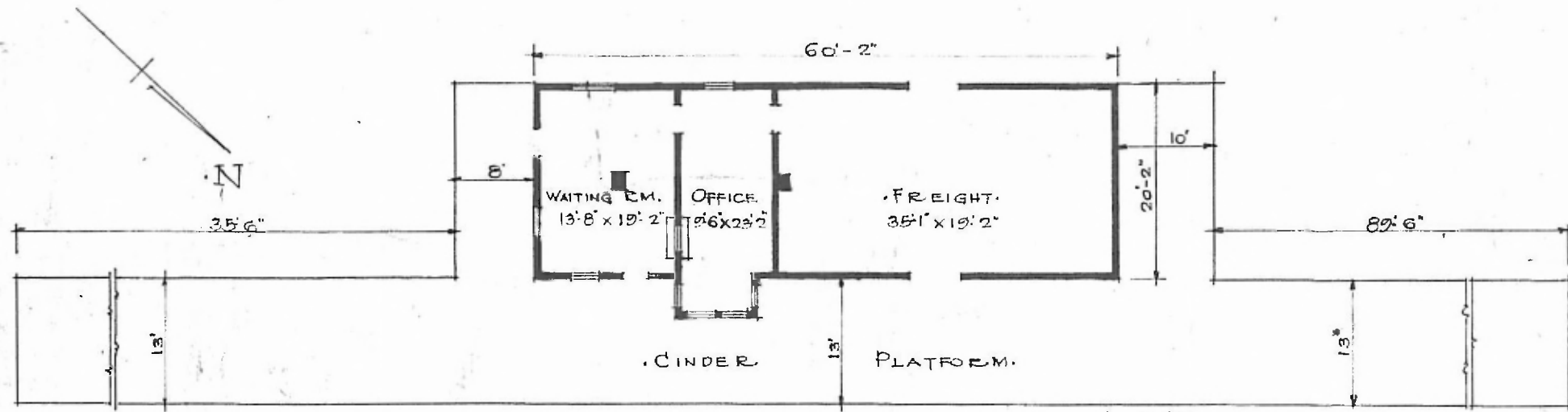


ERECTED. 1900.
 TYPE. FRAME.
 FOUNDATION. PILE HEADS.
 WALLS. 2" x 6"
 ROOF { TYPE. GABLE. SHINGLE
 { PITCH. 1/2
 HEATING. STOVES.

FLOOR. 3/4" x 3 1/4" Y. PINE.
 FINISH { INSIDE 3/4" x 3 1/4" BR. CEILING
 { OUTSIDE 1" x 6" DROP SIDING
 CEILING HEIGHT 13'-0"
 LIGHTING. LAMPS
 SANITARY FACILITIES. OUTSIDE TOILET.



. FLOOR . PLAN . DIV. CENTRAL
 . SCALE . 1/16" = 1'-0"
 SUB. DIV. FT. SMITH
 STA. NO B. 379

• COMBINATION STATION AT
 • GROVE • OKLA.