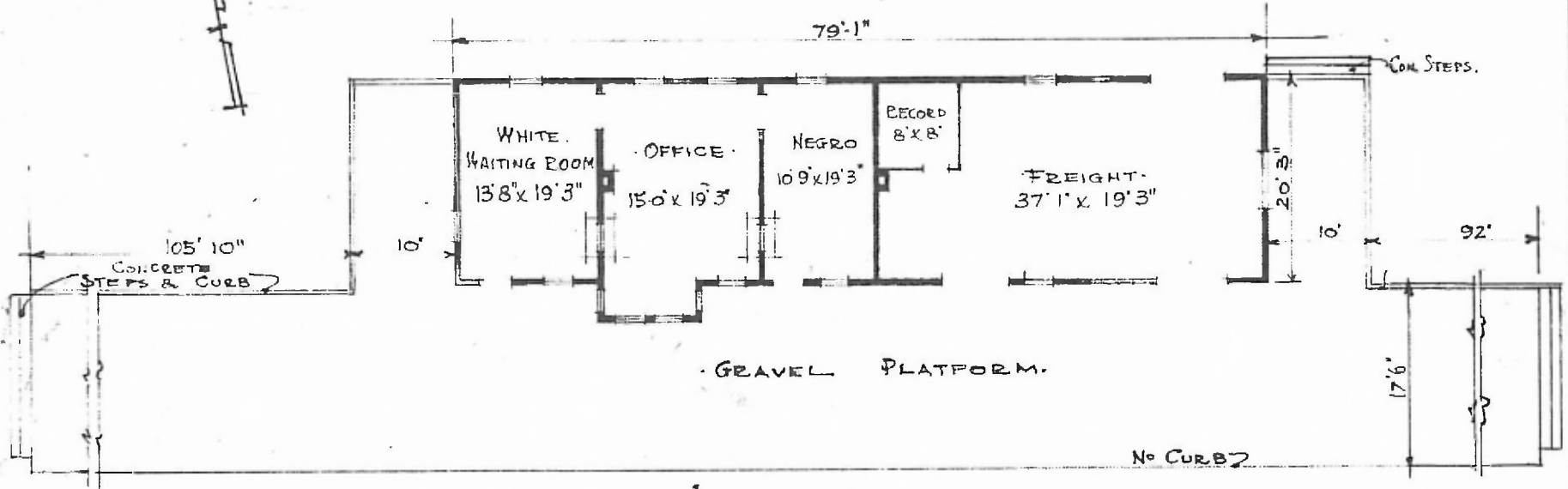


ERECTED. 1902. EXTD. 1912.
 TYPE. FRAME.
 FOUNDATION. PILE HEADS.
 WALLS. 2" X 6"
 ROOF { TYPE. GABLE SHINGLE.
 PITCH. 1/3
 HEATING. STOVES.

FLOOR. 3/4" X 3/4" Y. PINE.
 FINISH { INSIDE. 3/4" X 3/4" Bd. CEILING.
 OUTSIDE. BOARD & BATTIS.
 CEILING HEIGHT. 12'0" FRT. 13'0"
 LIGHTING. LAMPS.
 SANITARY FACILITIES. OUTSIDE TOILETS.



FLOOR PLAN.
 SCALE 1/16" = 1'0".

DIV. CENTRAL
 SUB. DIV. ARKINDA
 STD. NO. W-614

COMBINATION STATION AT
 HAWORTH OKLA.