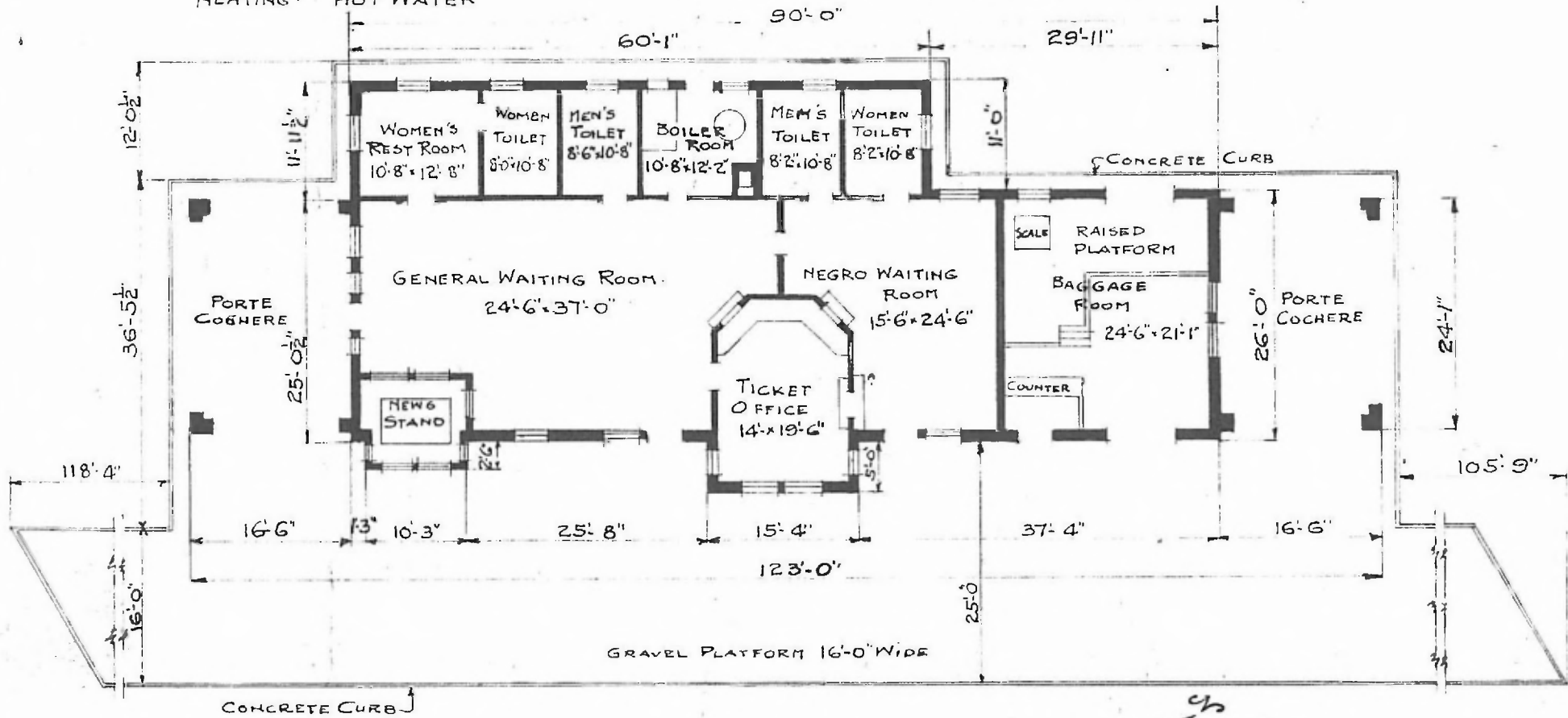


8

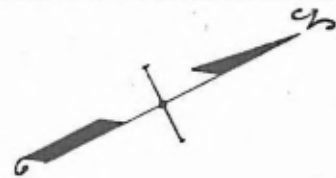
ERECTED 1916
 TYPE STUCCO
 FOUNDATION CONCRETE
 WALLS 8" HOLLOW TILE
 ROOF { 5 PLY BUILT UP
 8" FALL
 HEATING HOT WATER

FLOOR CONCRETE
 FINISH { INSIDE PLASTER
 OUTSIDE CEMENT PLASTER
 CEILING HEIGHT 12'-0"
 LIGHTING ELECTRIC
 SANITARY FACILITIES INSIDE TOILETS



PASSENGER STATION AT
 HENRYETTA, OKLA.

FLOOR PLAN
 SCALE: 1/16" = 1'-0"



OCT. 6, 1916