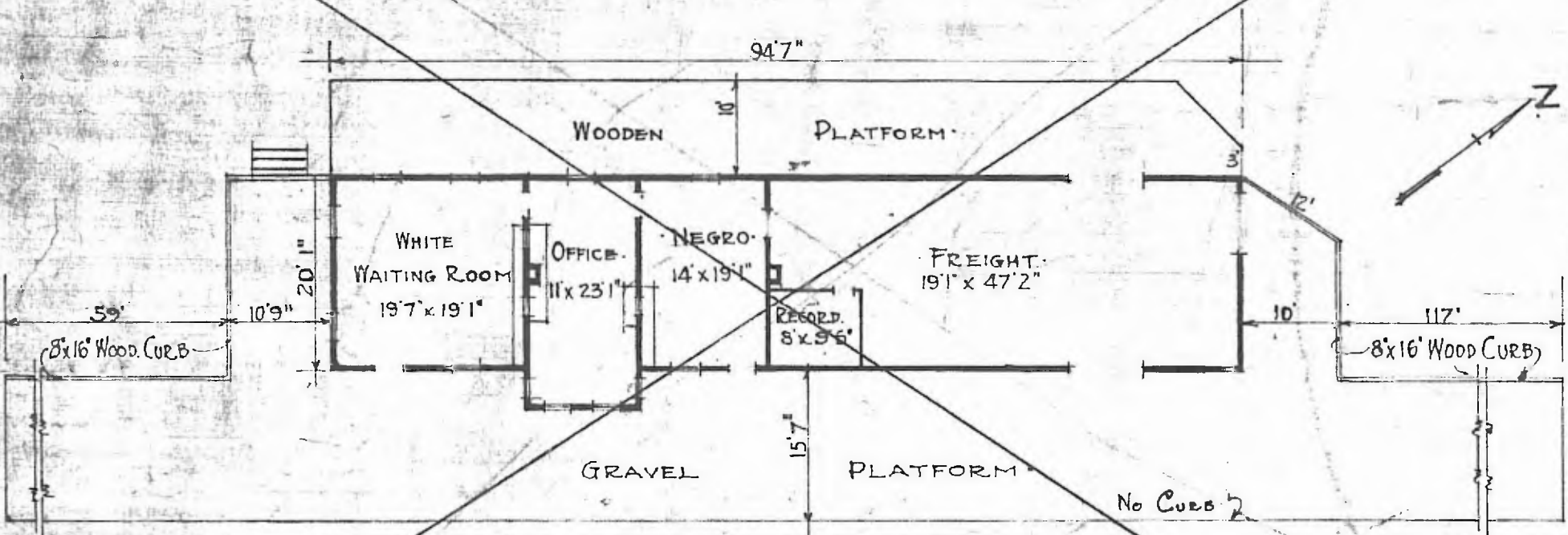


ERECTED. 1900.  
 TYPE. FRAME.  
 FOUNDATION. PILE HEADS.  
 WALLS. 2"x6"  
 ROOF { TYPE. GABLE-SHINGLE.  
 PITCH. 1/3  
 HEATING. GAS STOVES.

FLOOR. 2"x3 1/4" Y. PINE.  
 INSIDE. 2" Bd. CEILING.  
 FINISH { OUTSIDE. BOARD & BATTIS.  
 CEILING HEIGHT. 11'7" FRT. 13'2"  
 LIGHTING. GAS LIGHTS.  
 SANITARY FACILITIES. OUTSIDE TOILETS.

7



FLOOR PLAN -  
 SCALE 1/16" = 1'0"

DIV. Southeastern  
 Sub. Div. Creek.  
 Sta. No. E482

VOID

COMBINATION STATION AT  
 HENRYETTA OKLA

SEPT 18 1915