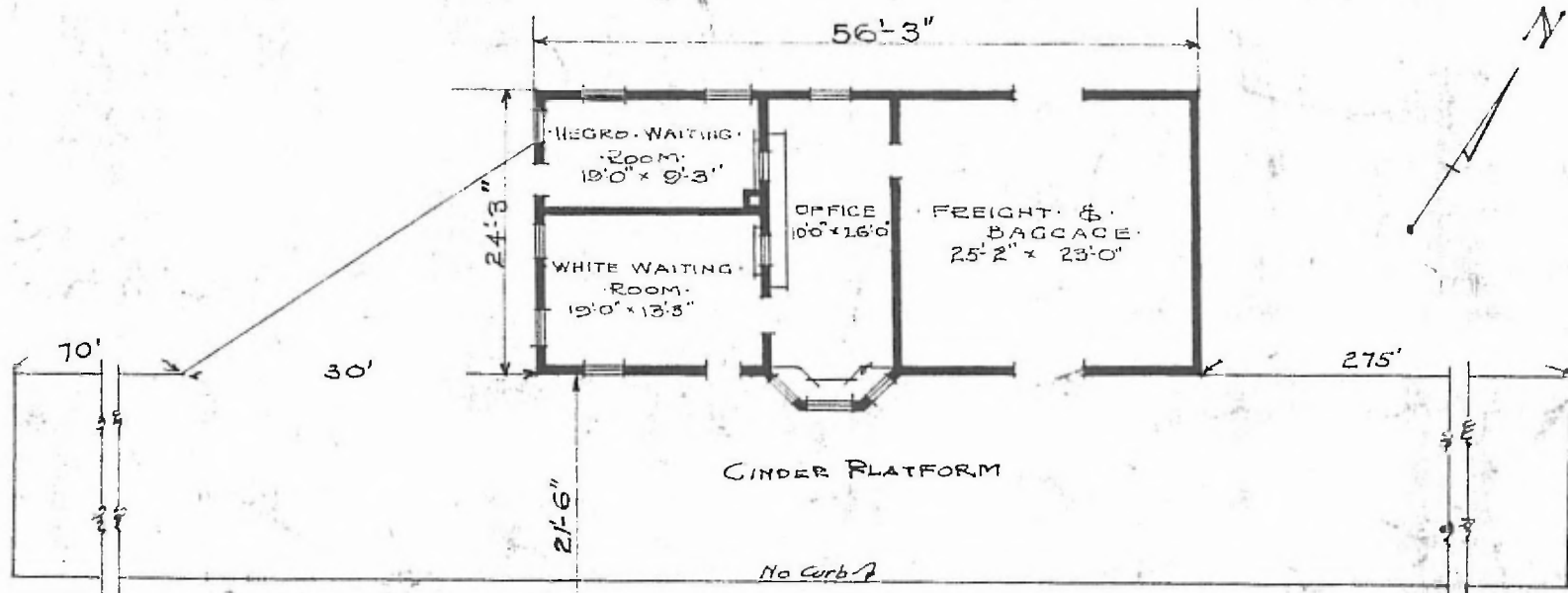


·ERECTED· 1916
 ·TYPE· FRAME
 ·FOUNDATION· PILE HEADS
 ·WALLS· 2"x6"
 ·ROOF· {TYPE: HIP, SHINGLES
 PITCH: 1/3
 ·HEATING· STOVES

·FLOOR· 3/4"x3/4" Y.P.
 ·FINISH· {INSIDE: 3/4"x3/4" M.&B
 OUTSIDE: DROP SIDING
 ·CEILING HEIGHT· 11'-0"
 ·LIGHTING· OIL LAMPS
 ·SANITARY FACILITIES· OUTSIDE TOILETS.

DIV. SOUTHWESTERN
 SUB-DIV. OKLAHOMA
 STA. No. G 450

98



·FLOOR PLAN·
 SCALE 1/16" = 1'-0"

·COMBINATION STATION·
 ·HEY BURN OKLA·