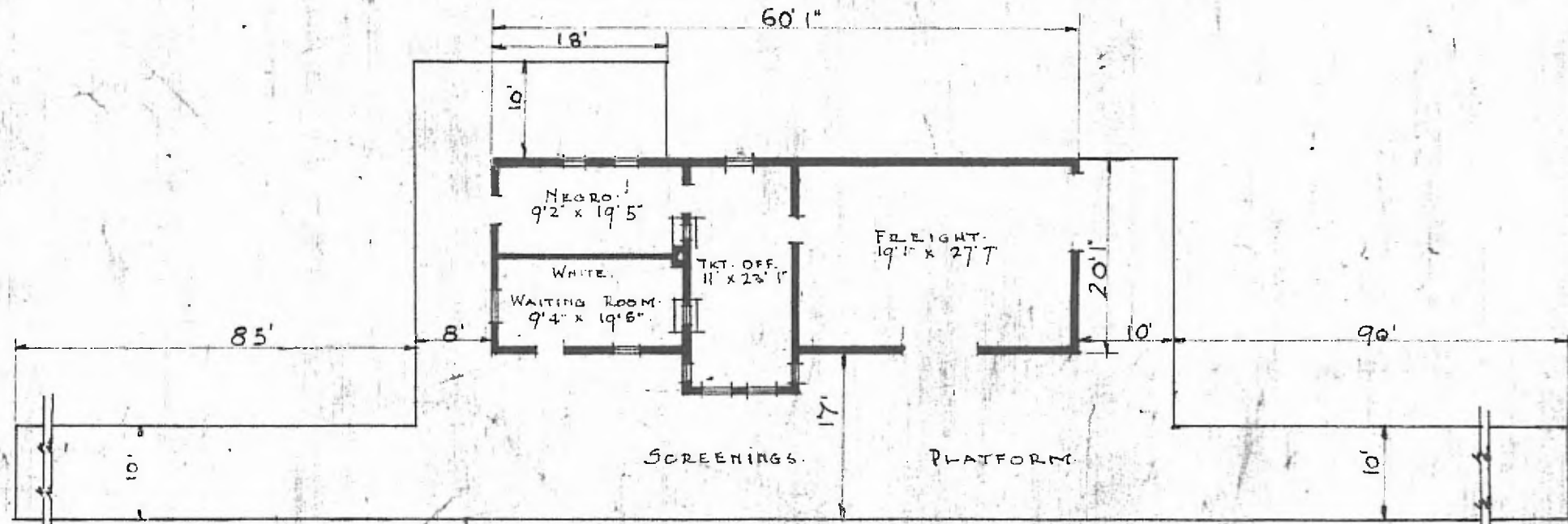
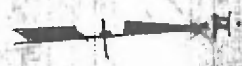


ERECTED. 1900.
 TYPE. FRAME.
 FOUNDATION. PILE HEADS.
 WALLS. 2x6"
 ROOF { TYPE. GABLE SHINGLE.
 PITCH 1/3.
 HEATING. STOVES.

FLOOR. 3/4" Y. PINE.
 FINISH. { INSIDE. BO. CEILING.
 OUTSIDE. BO. & BATT.
 CEILING HEIGHTS. 11'9" FRT. 13'3"
 LIGHTING. LAMPS.
 SANITARY FACILITIES. OUTSIDE TOILETS.



FLOOR PLAN.
 SCALE 1/16" = 1'0"



COMBINATION STATION AT.
 HICKORY OKLA.