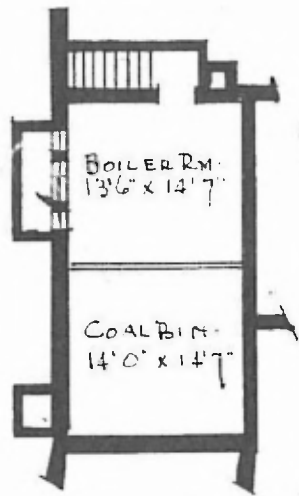
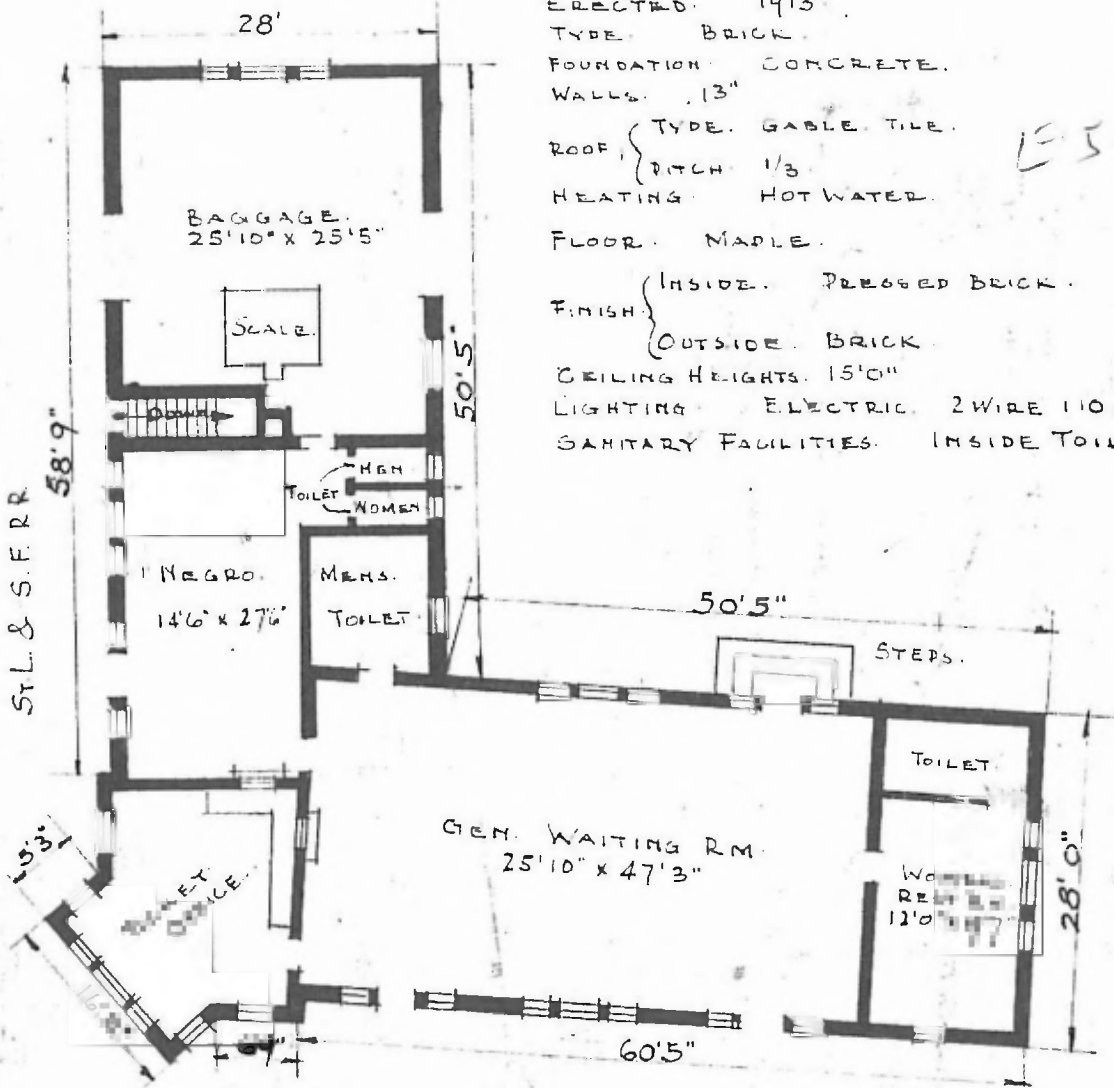
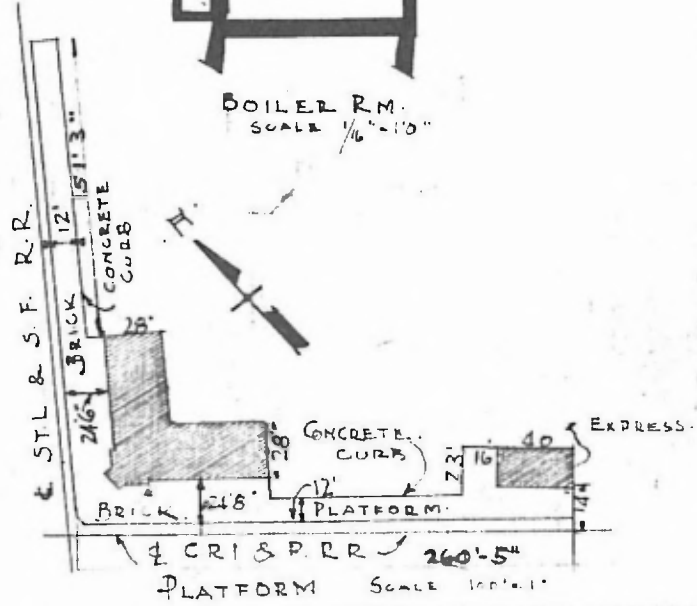


ERECTED: 1913
 TYPE: BRICK
 FOUNDATION: CONCRETE.
 WALLS: 13"
 ROOF: TYPE: GABLE TILE.
 DITCH: 1/3
 HEATING: HOT WATER.
 FLOOR: MAPLE.
 FINISH: { INSIDE: PRESSED BRICK.
 OUTSIDE: BRICK.
 CEILING HEIGHTS: 15'0"
 LIGHTING: ELECTRIC. 2 WIRE 110 AC.
 SANITARY FACILITIES: INSIDE TOILETS.

E-520



BOILER RM. SCALE 1/6" = 1'0"



JOINT PASSENGER STATION
 HOLDENVILLE OKLA.