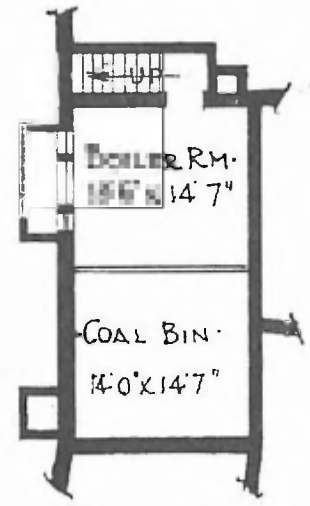
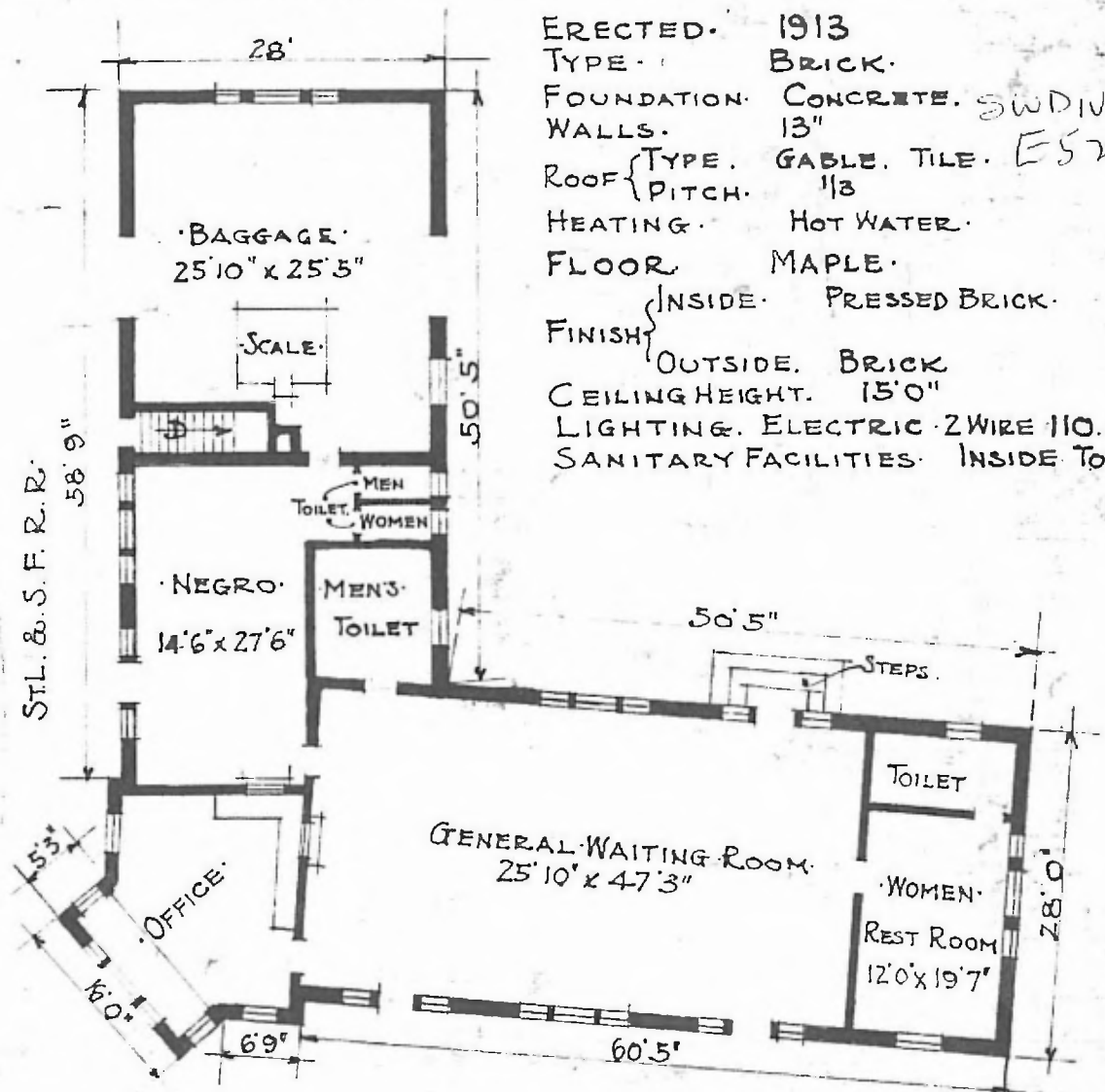
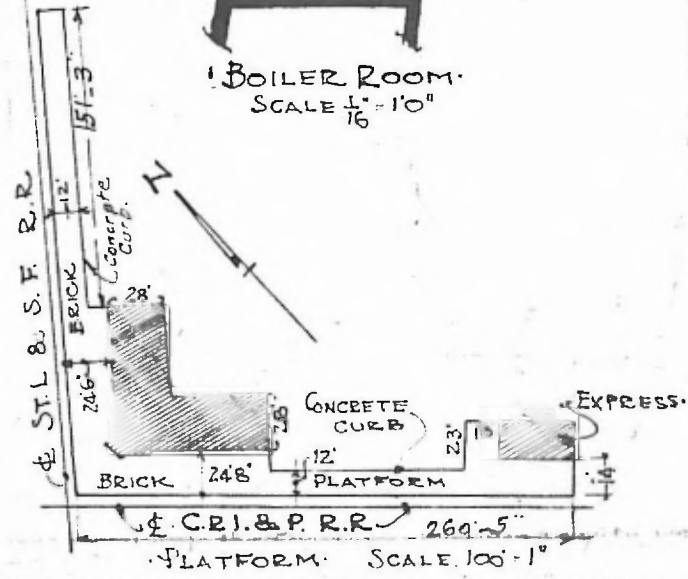


ERECTED. 1913  
 TYPE. BRICK.  
 FOUNDATION. CONCRETE. SWDIV Creek  
 WALLS. 13"  
 ROOF { TYPE. GABLE. TILE. E520  
 PITCH. 1/3  
 HEATING. HOT WATER.  
 FLOOR. MAPLE.  
 FINISH { INSIDE. PRESSED BRICK.  
 OUTSIDE. BRICK  
 CEILING HEIGHT. 15'0"  
 LIGHTING. ELECTRIC 2 WIRE 110 A.C.  
 SANITARY FACILITIES. INSIDE TOILET.



! BOILER ROOM.  
 SCALE 1/16" = 1'0"



JOINT PASSENGER STATION AT  
 HOLDENVILLE OKLA.