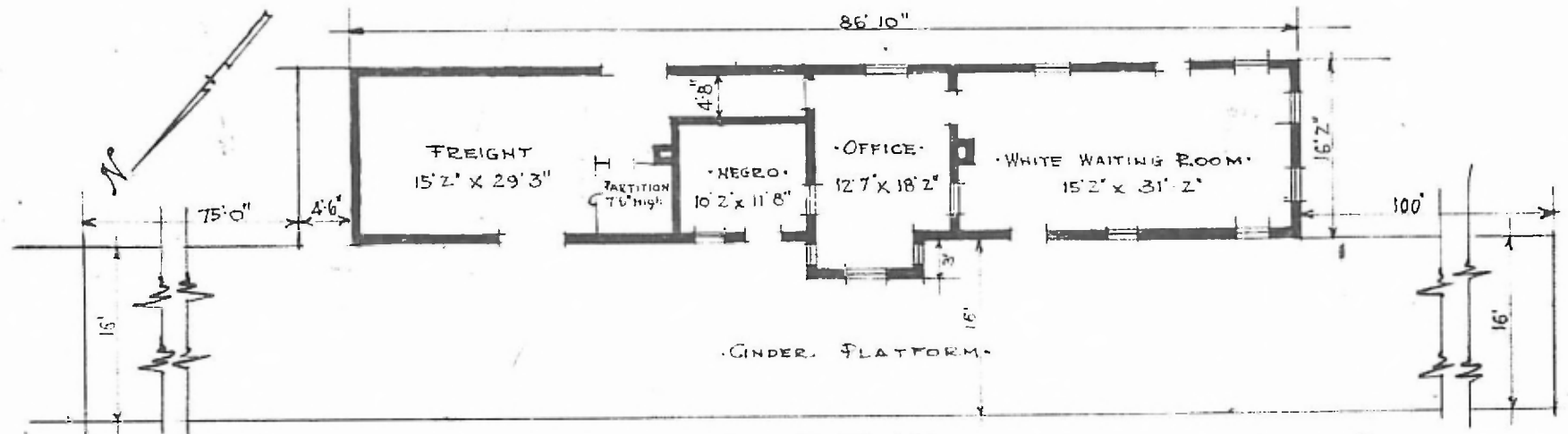


ERECTED. 1900.  
 TYPE. FRAME.  
 FOUNDATION. PILE HEADS.  
 WALLS. 2"x4"  
 ROOF { TYPE HIP SHINGLES.  
 PITCH 1/3  
 HEATING. STOVES.

FLOOR. 3/4" x 3/4" Y PINE.  
 FINISH { INSIDE 3/4" x 3/4" BD. CEILING.  
 OUTSIDE BOARD & BATT.  
 CEILING HEIGHT. 11'5" FET. RM. 12'0"  
 LIGHTING. LAMPS.  
 SANITARY FACILITIES. OUTSIDE TOILET.



FLOOR PLAN  
 SCALE 1/16" = 1'0"

SW - DIV. RED RIVER  
 SUB. DIV. MUSKOGEE  
 STA. No. V434

COMBINATION STATION AT  
 HULBERT OKLA.

Aug. 27. 1915.