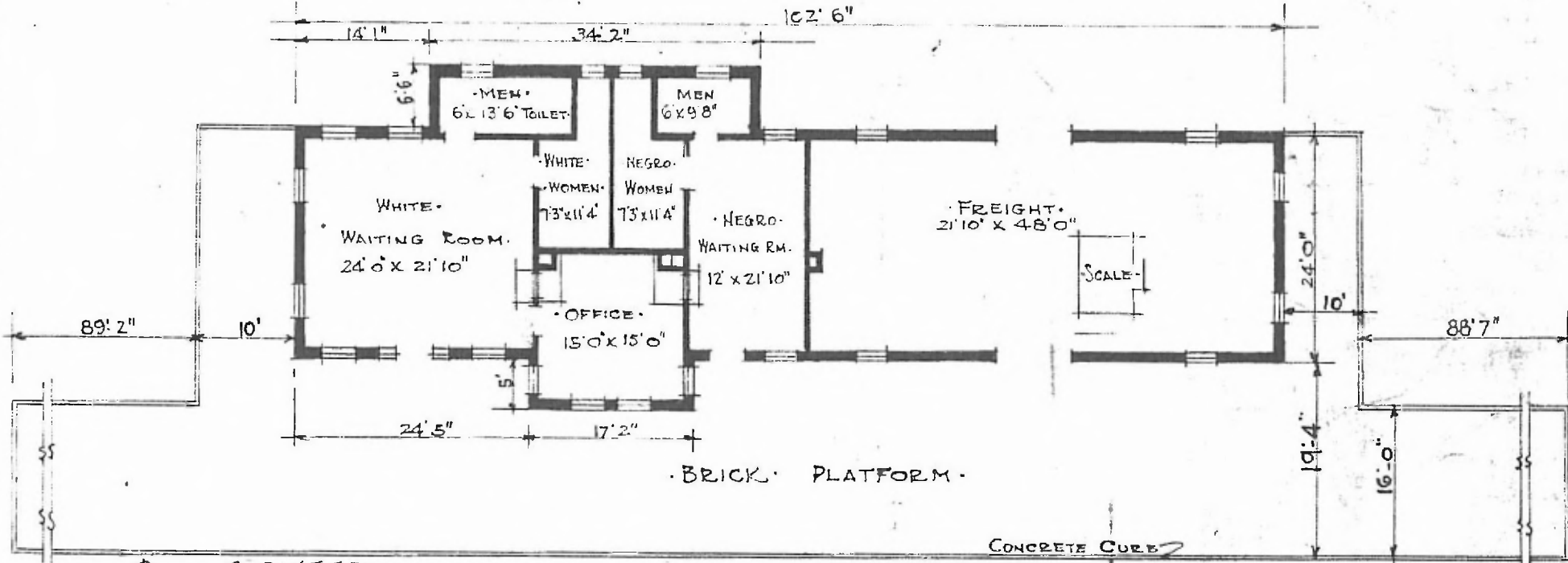




ERECTED. 1912.
 TYPE. BRICK.
 FOUNDATION CONCRETE.
 WALLS. 13"
 ROOF { TYPE. HIP. TILE.
 PITCH 1/3
 HEATING . STOVES.

FLOOR. Y. PINE. FRT. CONCRETE.
 FINISH { INSIDE. PLASTER
 OUTSIDE. BRICK.
 CEILING HEIGHT. 12' 6"
 LIGHTING. ELECTRIC. 2 WIRE. 110 A.C.
 SANITARY FACILITIES. INSIDE TOILET.



DIV. CENTRAL
 SUB. DIV. ARKIN RA
 STA. NO. W. 602

FLOOR PLAN
 SCALE 1/16" = 1' 0"

COMBINATION STATION AT
 IDABEL OKLA.