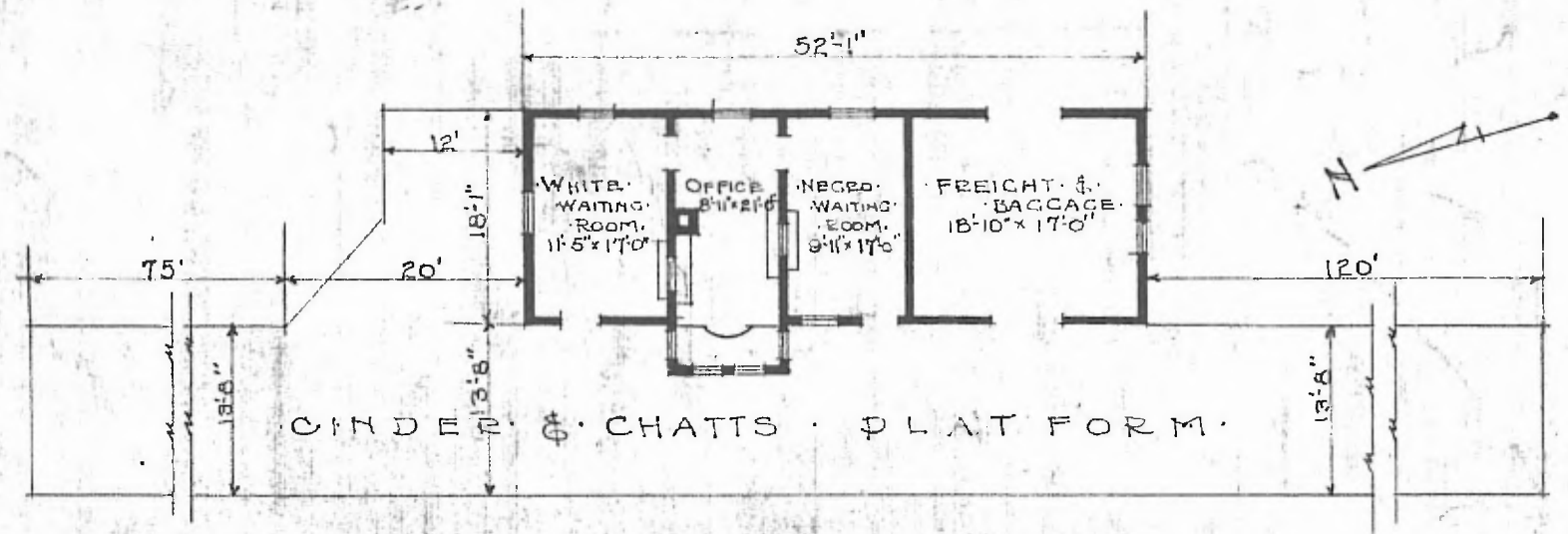


58

ERECTED: 1899
 TYPE: FRAME
 FOUNDATION: PILE HEADS
 WALLS: 2"x6"
 ROOF: (TYPE: GABLE, SHINGLES)
 HEATING: (PITCH: 1/3) STOVES

FLOOR: 3/4"x3/4" Y.P.
 FINISH: (INSIDE: 3/4"x3/4" M. & B. BOARDS & BATTENS)
 CEILING HEIGHT: 11'-4"
 LIGHTING: OIL LAMPS
 SANITARY FACILITIES: OUTSIDE TOILETS

DIV. SOUTHWESTERN
 SUB-DIV. OKLAHOMA
 STAN No 6446



FLOOR PLAN
 SCALE 1/16" = 1'-0"

COMBINATION STATION
 KELLYVILLE OKLA.

JULY 21, 1916.