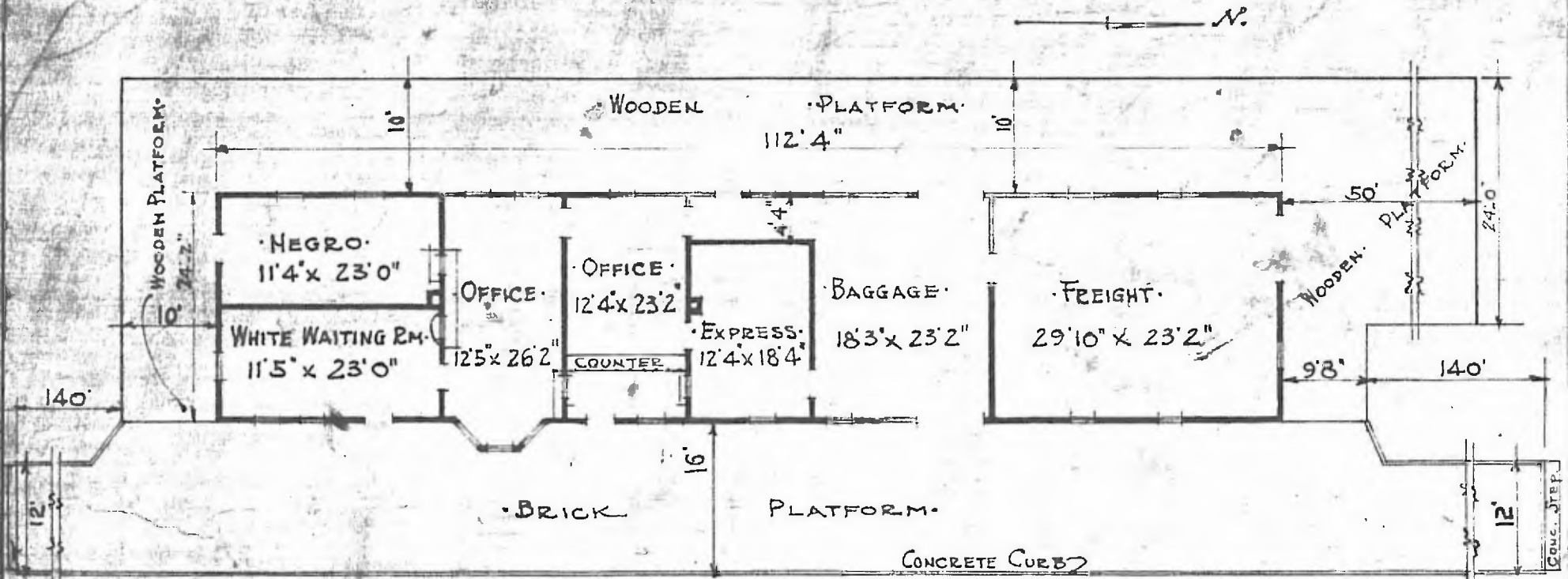


ERECTED 1907.
 TYPE FRAME.
 FOUNDATION PILE HEADS.
 WALLS 2x6".
 ROOF TYPE HIP SHINGLES.
 PITCH 12.
 HEATING GAS STOVES.

FLOOR 3 1/4" Y. PINE.
 FINISH INSIDE 3 1/4" Bd. CEILING.
 OUTSIDE 1x6" DROP SIDING.
 CEILING HEIGHT 11'4".
 LIGHTING GAS LAMPS.
 SANITARY FACILITIES OUTSIDE TOILET.

S.W. DIV.
 Creek Sub.
 E442



FLOOR PLAN.
 SCALE 1/16" = 1'0"

COMBINATION STATION AT
 KIEFER, OKLA.

OCT. 2. 1915.

CONCRETE STEP.