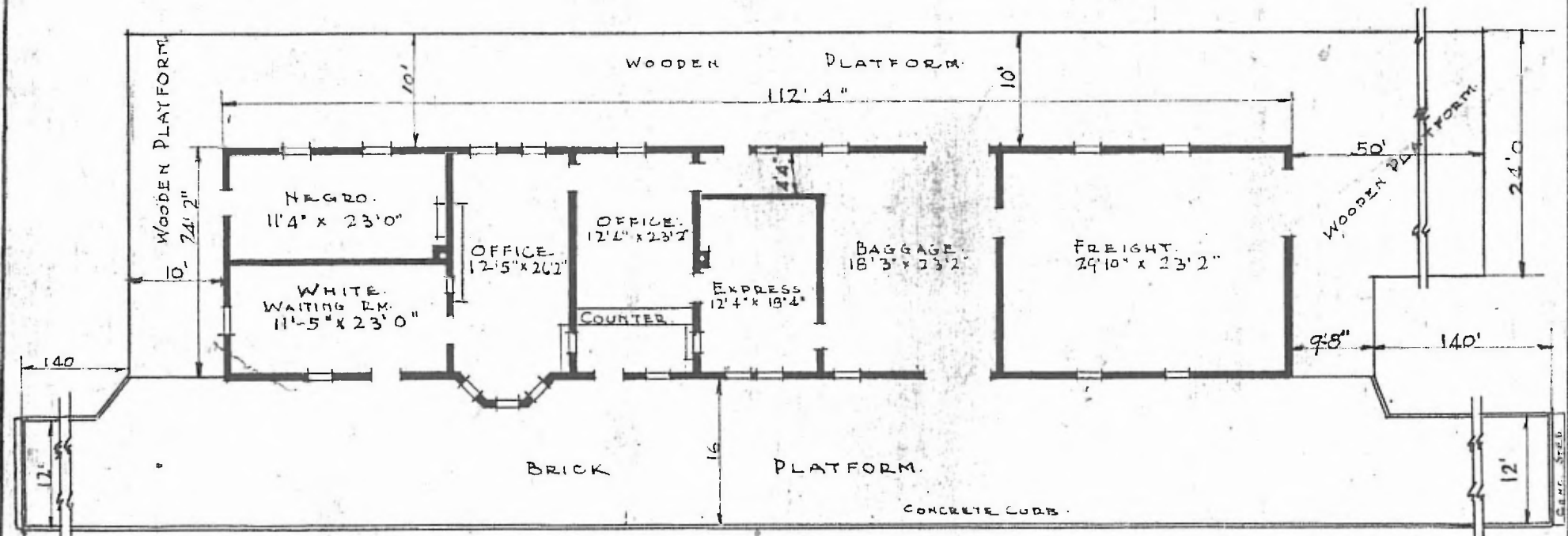


S.W. - DIV. RED RIVER
 SUB. DIV. SHERMAN
 CREEK STATION E442 (1)

ERECTED: 1907.
 TYPE: FRAME.
 FOUNDATION: PILE HEADS.
 WALLS: 2"x6"
 ROOF { TYPE: HIP SHINGLES.
 PITCH: 1/2
 HEATING: GAS STOVES.

FLOOR: 3/4" Y. PINE.
 FINISH { INSIDE: 3/4" BB CEILING.
 OUTSIDE: 1"x6" DROP SIDING.
 CEILING HEIGHTS: 11'4"
 LIGHTING: GAS LAMPS.
 SANITARY FACILITIES: OUTSIDE TOILETS.



FLOOR PLAN.
 SCALE 1/16" = 1'0"

COMBINATION STATION AT
 KIEFER OKLA.

OCT 2, 1915