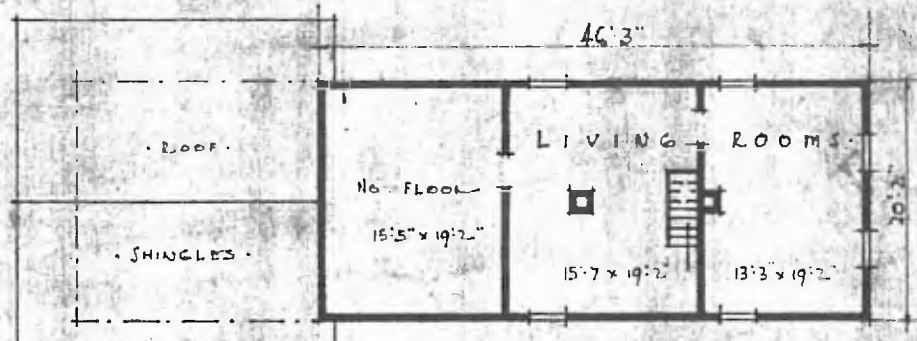
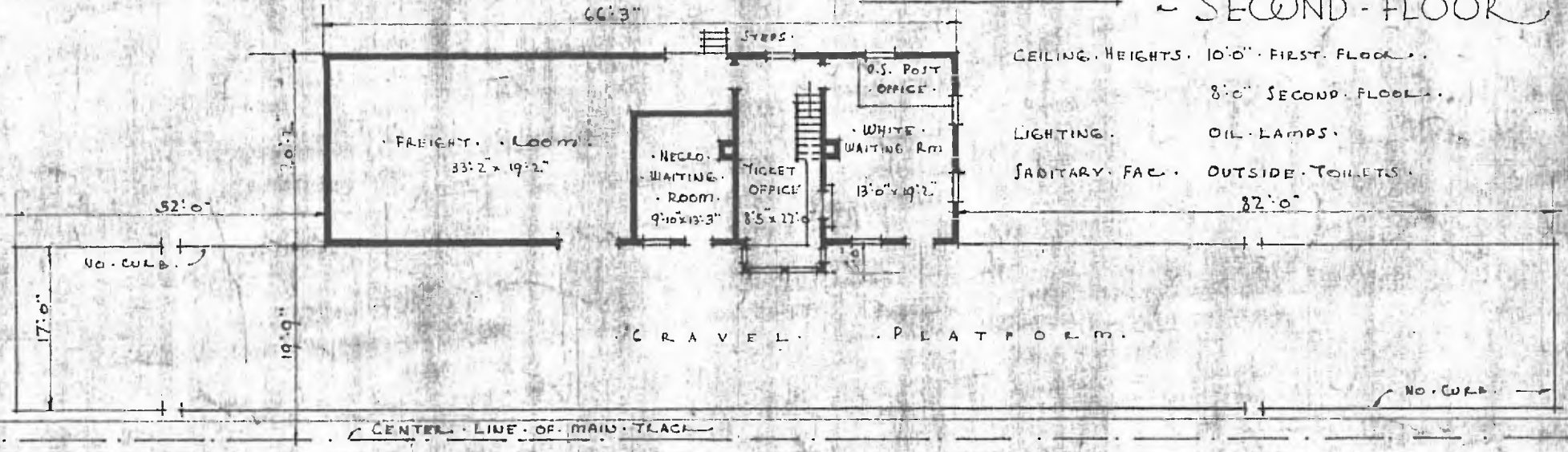


82

ERECTED. 1908.
 TYPE. FRAME.
 FOUNDATION. PILE HEADS.
 WALLS. 2x6" STUDS.
 ROOF. { TYPE. GABLE SHINGLES.
 PITCH. APPROX. 1/3 PITCH.
 HEATING. STOVES.
 FLOOR. 7/8" x 3/4" YELLOW PINE.
 FINISH { INSIDE. 1x6" BEADED CEILING.
 OUTSIDE. BOARDS & BATTS.



SECOND FLOOR



CEILING HEIGHTS. 10'0" FIRST FLOOR.
 8'0" SECOND FLOOR.
 LIGHTING. OIL LAMPS.
 SANITARY FAC. OUTSIDE TOILETS.
 82'0"

FLOOR PLAN SCALE 1/16" = 1'0"

DIV. CENTRAL
 SUB. DIV. ARTHUR
 STA. No. 531
 COMBINATION STATION AT
 KOSOMA - OKLAHOMA



MAY 26 1915