

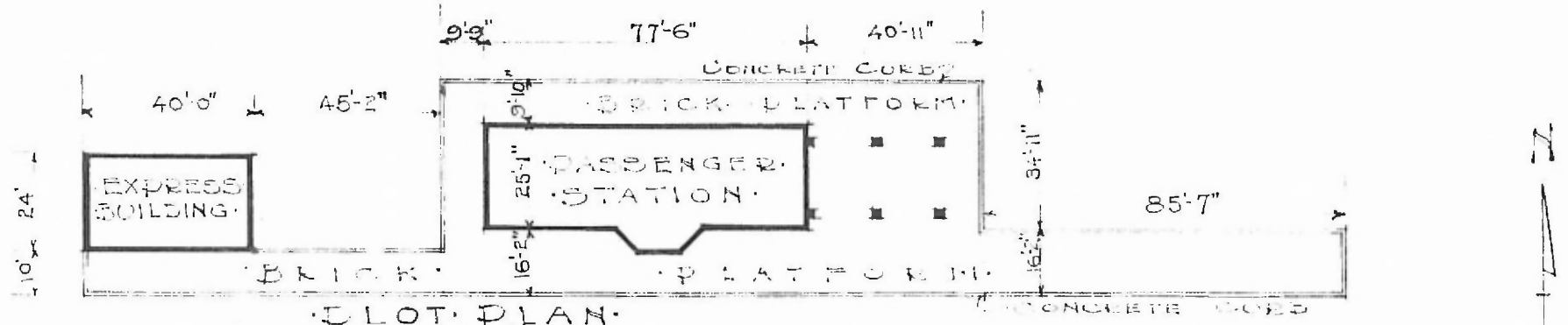
DIV. SOUTH EASTERN

GRANTON 5013, DIV. CHICKASHA  
 FLASTERED STA. No. E-630

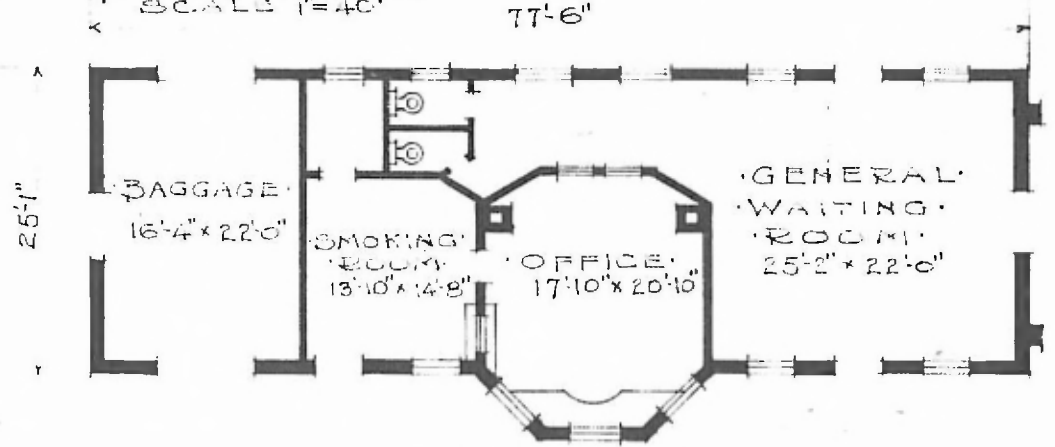
87

ERECTED: 1902  
 TYPE: STONE  
 FOUNDATION: CONCRETE  
 WALLS: 18"  
 ROOF: TYPE: HIP, TIL.  
 PITCH: 3/8  
 HEATING: STOVES

FLOOR FINISH: (INSIDE)  
 (OUTSIDE)  
 CEILING HEIGHT:  
 LIGHTING: ELECTRIC  
 SANITARY FACILITIES: INSIDE TOILETS.



LOT PLAN  
 SCALE 1"=40'



FLOOR PLAN  
 SCALE 1/16"=10"

PASSENGER STATION  
 LAWTON OKLA.

BUILT 1902