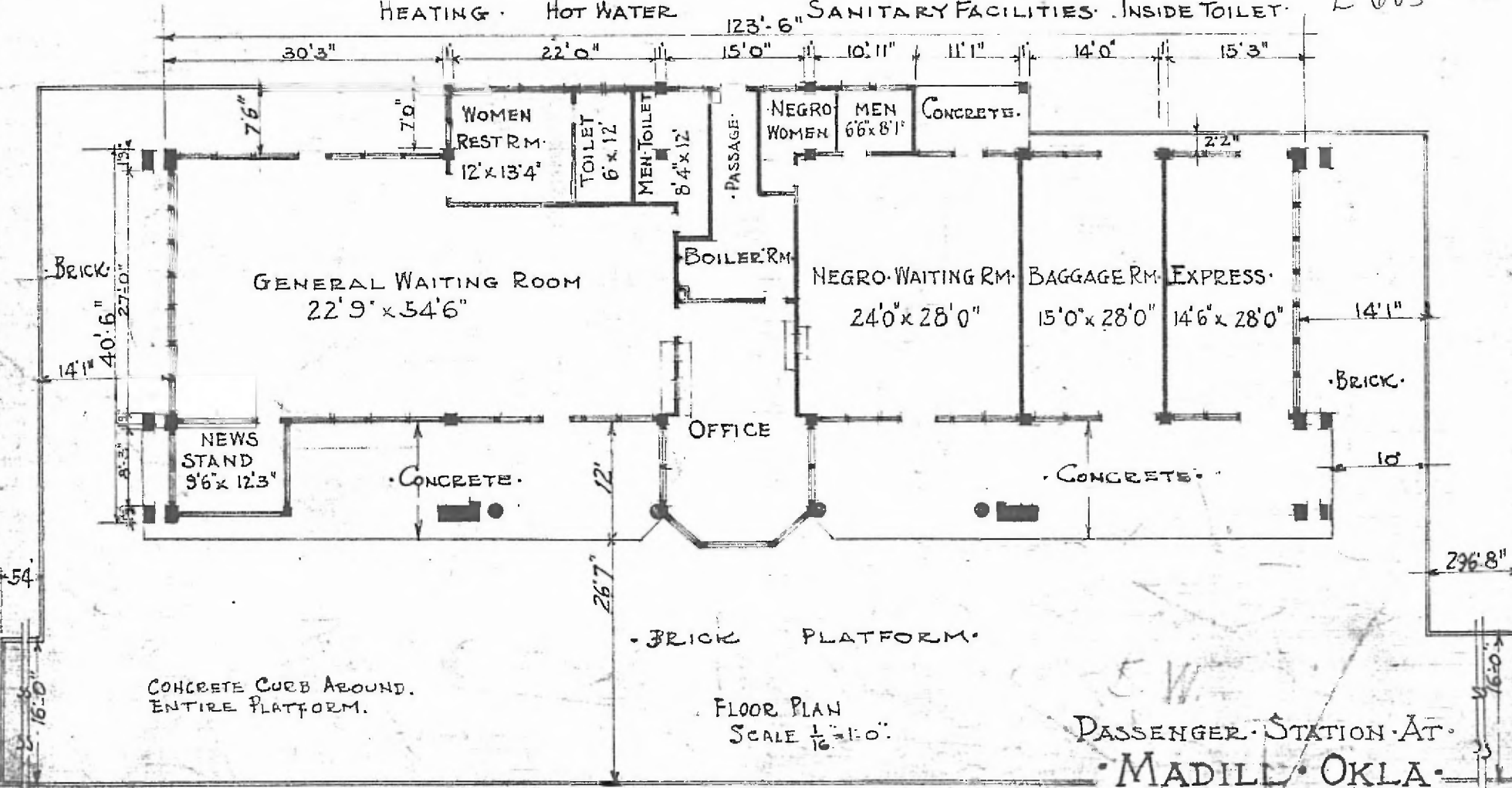


ERECTED. 1913.  
 TYPE. CONCRETE.  
 FOUNDATION. CONCRETE.  
 WALLS. 6"  
 ROOF { TYPE. FLAT. TAR & GRAVEL.  
 PITCH.  
 HEATING. HOT WATER

FLOOR. CONCRETE.  
 FINISH { INSIDE. PLASTER.  
 OUTSIDE. CONCRETE  
 CEILING HEIGHT. 13'6"  
 LIGHTING. ELECTRIC. 2 WIRE 110. A.C.  
 SANITARY FACILITIES. INSIDE TOILET.

SW DIV (25)  
 Sherman  
 E-603 N.



OCT. 19. 1915.