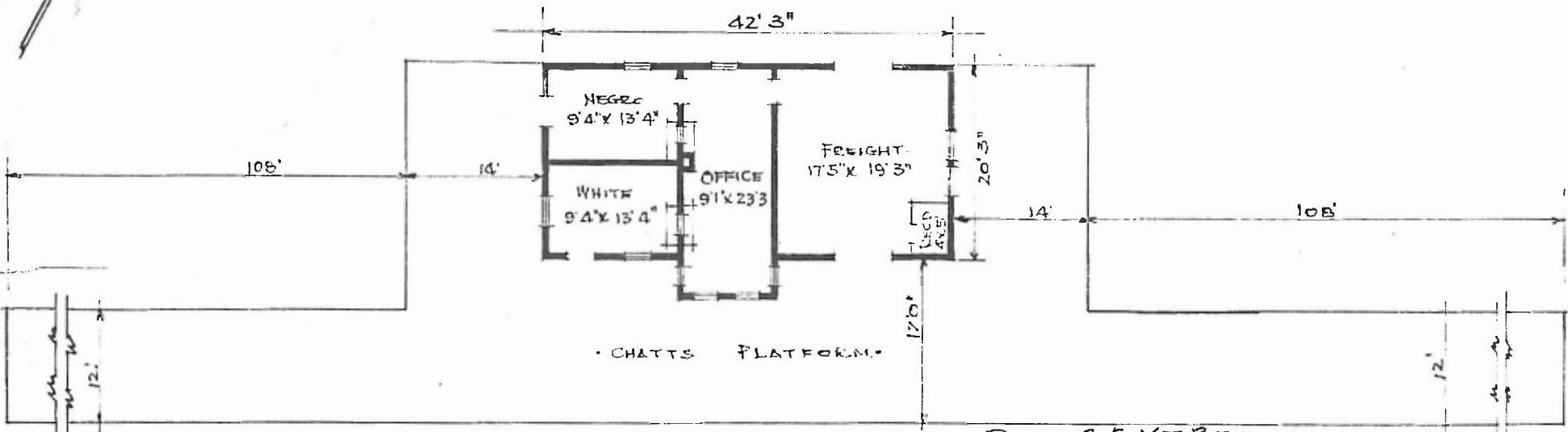


ERECTED. 1902.
 TYPE. FRAME.
 FOUNDATION. PILE HEADS.
 WALLS. 2'x6'
 ROOF { TYPE. GABLE SHINGLE.
 PITCH 1/3
 HEATING. STOVES.

FLOOR. 3/4" x 3/4" Y. PINE.
 FINISH { INSIDE. 1/2" x 3/4" BD. CEILING
 OUTSIDE. BOARD & BATT.
 CEILING HEIGHT. 12'0" FET 2M. 13'4"
 LIGHTING. LAMPS.
 SANITARY FACILITIES. OUTSIDE TOILETS.



FLOOR PLAN
 SCALE 1/16" = 1'0"

DIV. CENTRAL
 SUB. DIV. ARDMORE
 STA. NO. 4-619

JUNE 18. 1915.

COMBINATION STATION AT
 MEAD OKLA.