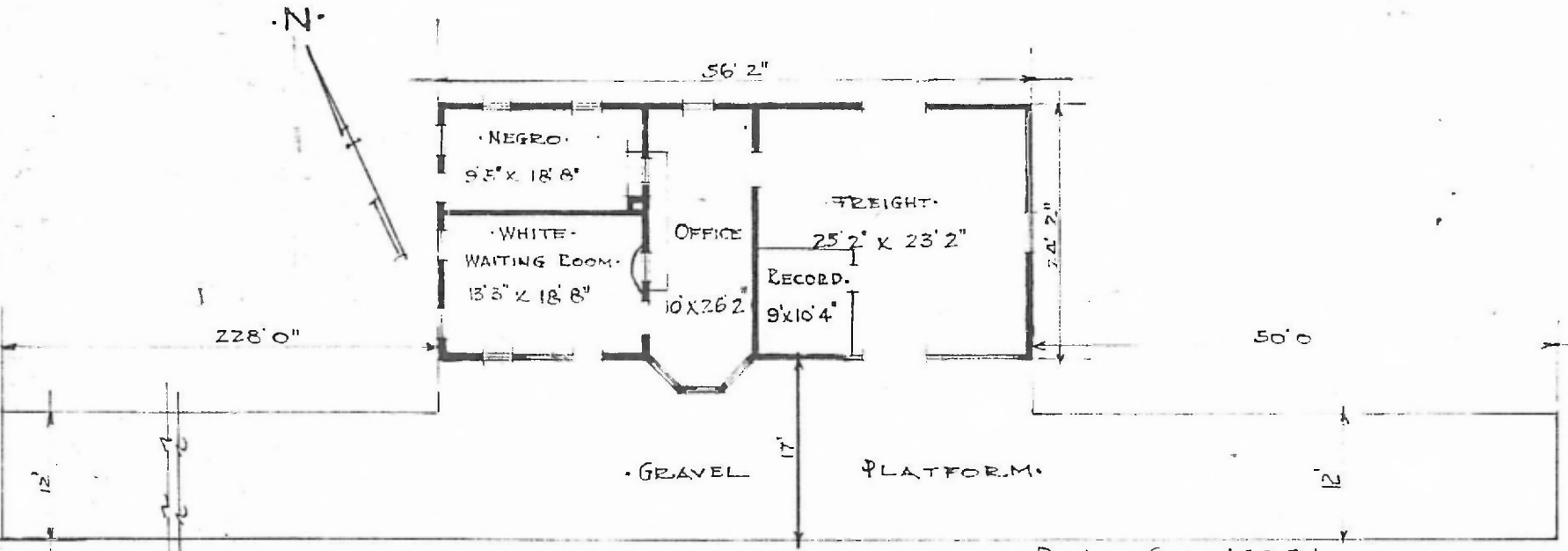


ERECTED. - 1910 -  
 TYPE. FRAME.  
 FOUNDATION. CONCRETE.  
 WALLS. 2' x 6"  
 ROOF { TYPE. HIP. SHINGLES.  
 PITCH 1/3  
 HEATING. STOVES.

FLOOR. 2 1/4" MAPLE.  
 FINISH { INSIDE. 3/4 x 3 1/4" V. JOINT.  
 OUTSIDE. O.G. DEEP SIDING  
 CEILING HEIGHT. 11' 2 1/2"  
 LIGHTING. LAMPS.  
 SANITARY FACILITIES. OUTSIDE TOILET.



- FLOOR PLAN.  
 SCALE 1/16" = 1' 0".

DIV. CENTRAL  
 SUB. DIV. ARMORE ARKINDA  
 STA. No. 549

COMBINATION STATION AT  
 MILLERTON OKLA.