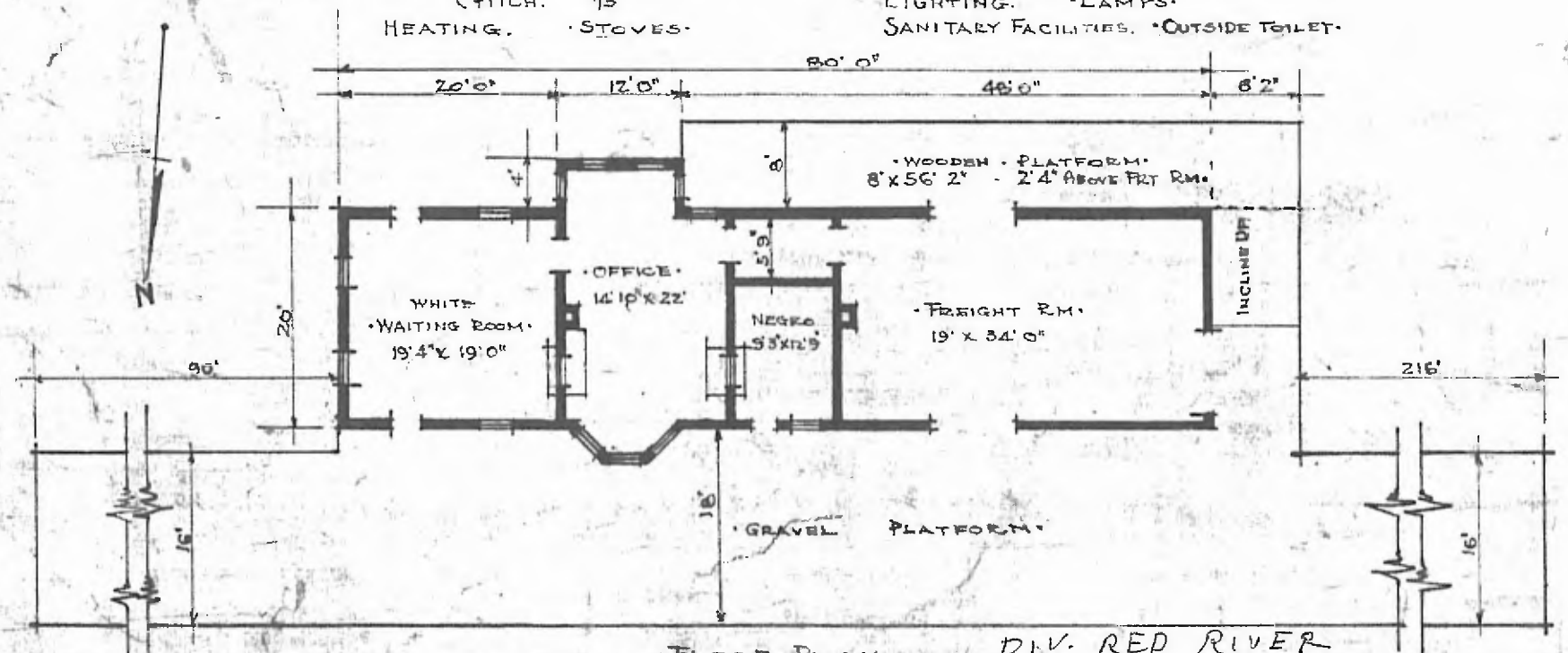


ERECTED. 1900-  
 TYPE. FRAME;  
 FOUNDATION. PILE HEADS.  
 WALLS. 2"X6"  
 ROOF { TYPE. GABLE. SHINGLES.  
 PITCH. 1/3  
 HEATING. STOVES.

FLOOR. 3/4" X 3 1/4" Y. PINE.  
 FINISH { INSIDE. 3/4" X 3 1/4" Bd. CEILING  
 OUTSIDE. BOARD & BATT. 1/2" DROP. PASS END.  
 CEILING HEIGHT. 11'11" FLT. 14'8"  
 LIGHTING. LAMPS.  
 SANITARY FACILITIES. OUTSIDE TOILET.



FLOOR PLAN.  
 SCALE 1/8" = 1'0". SW - DIV. RED RIVER  
 SUB. DIV. MUSKOGEE  
 STA. No. Y488

COMBINATION STATION AT  
 MORRIS OKLA.

AUG. 16. 1915