

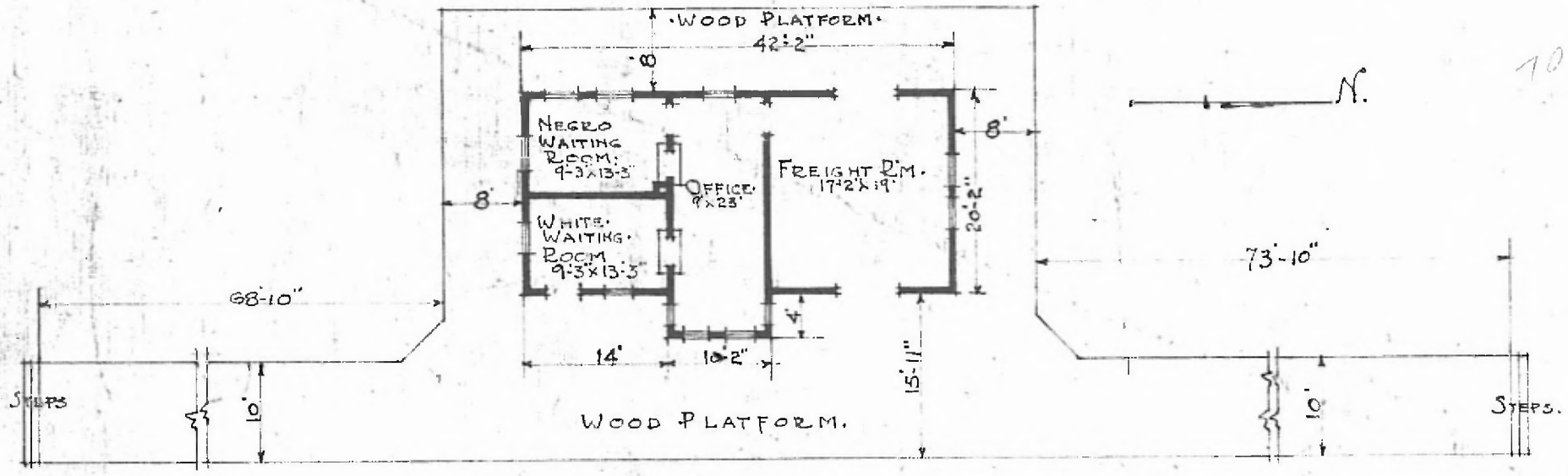
36.

ERECTED. 1902.
 TYPE. FRAME.
 FOUNDATION. PILE HEADS.
 WALLS. 2"x6" STUDS.
 ROOF. TYPE. GABLE. SHINGLES.
 HEATING. STOVES.

FLOOR. 7/8" x 3/4".
 FINISH. (INSIDE. 7/8" x 3/4" BEAD.
 (OUTSIDE. 1" x 12" BOARD & BATTS.
 CEILING HEIGHT. 12'-0".
 LIGHTING. LAMPS.
 SANITARY FACILITIES OUTSIDE. TOILETS.

Northern Div
 Alton Sub

L 179 - 1
 10.



FLOOR PLAN.
 SCALE 1/16" = 1'-0"

COMBINATION STATION.
 NARCISSA. OKLA.

JULY 26-1915.