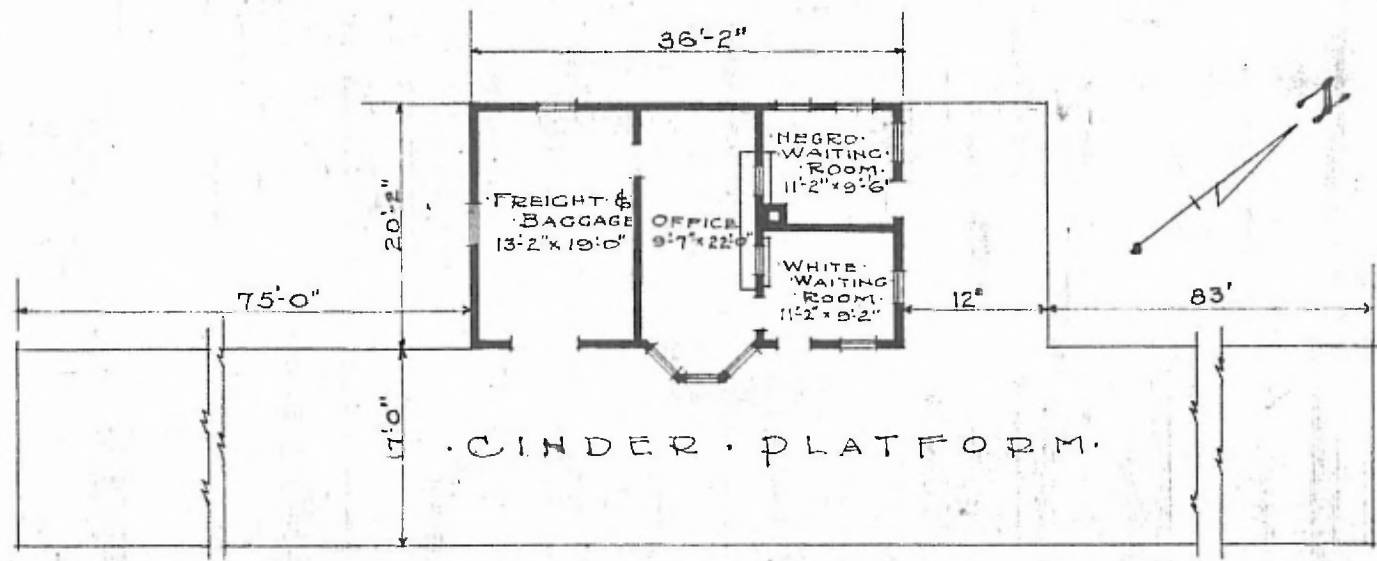


ERECTED 1909
 TYPE FRAME
 FOUNDATION PILE HEADS
 WALLS 2"x6"
 ROOF TYPE GABLE SHINGLES.
 PITCH $\frac{1}{3}$
 HEATING STOVES.

FLOOR FINISH { INSIDE
 OUTSIDE }
 CEILING HEIGHT 11'5"
 LIGHTING OIL LAMPS.
 SANITARY FACILITIES OUTSIDE TOILETS.

DIV. SOUTHWESTERN
 SUB. DIV. CHICKASAW
 STAN. No. G 587

75



FLOOR PLAN
 SCALE $\frac{1}{16}'' = 1'-0''$

COMBINATION STATION
 NORGE OKLA.

Nov. 8, 1916.