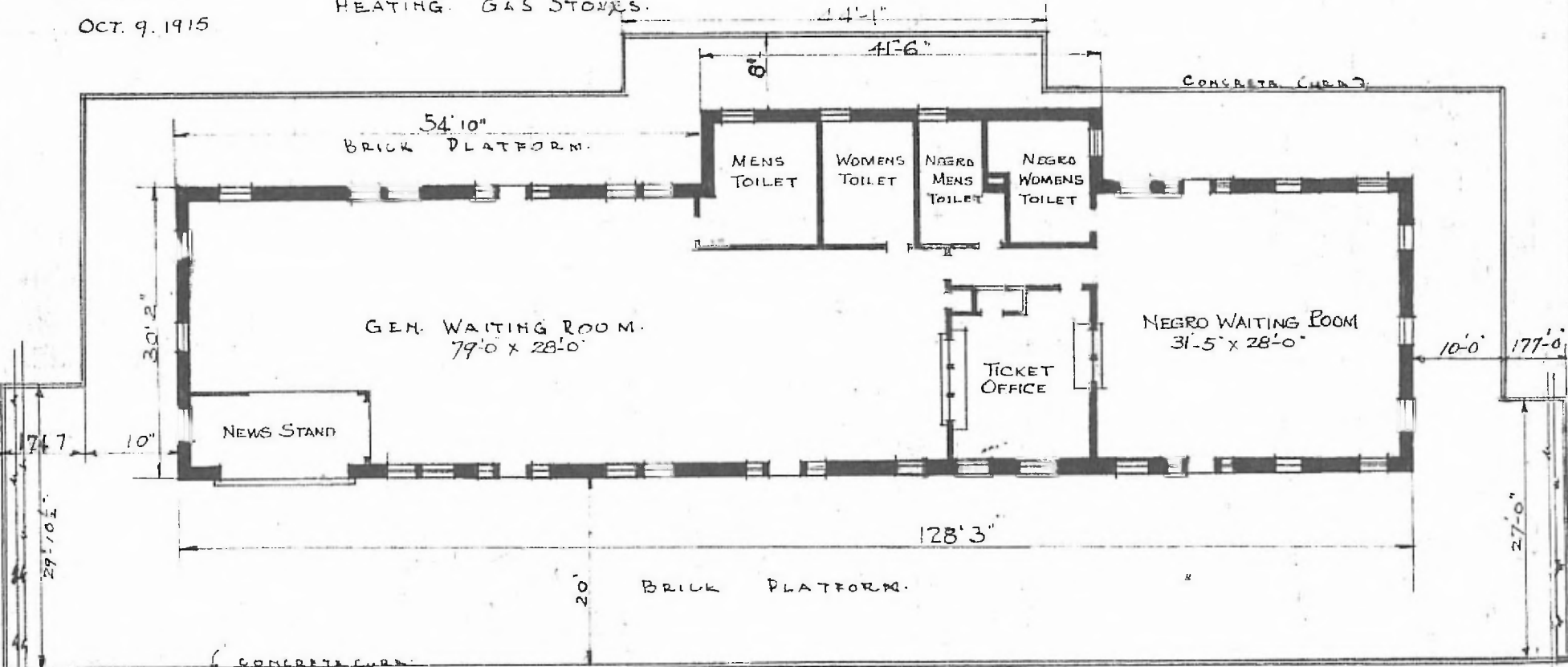


ERECTED. 1911.
 TYPE. BRICK.
 FOUNDATION. CONCRETE.
 WALLS. 13"
 ROOF { TYPE. H/D. TILE.
 PITCH 1/3
 HEATING. GAS STOVES.

FLOOR. MAPLE.
 FINISH. { INSIDE. PLASTER.
 OUTSIDE. BRICK.
 CEILING HEIGHTS. 14'3"
 LIGHTING. GAS & ELECTRIC.
 SANITARY FACILITIES. INSIDE TOILETS.

SW
 Creek
 E469

REVISED 4-10-22
 OCT. 9. 1915



FLOOR PLAN.
 SCALE 1/16" = 1'-0"
 N

PASSENGER STATION AT
 OKMULGEE OKLA.

SCALE 100' = 1"