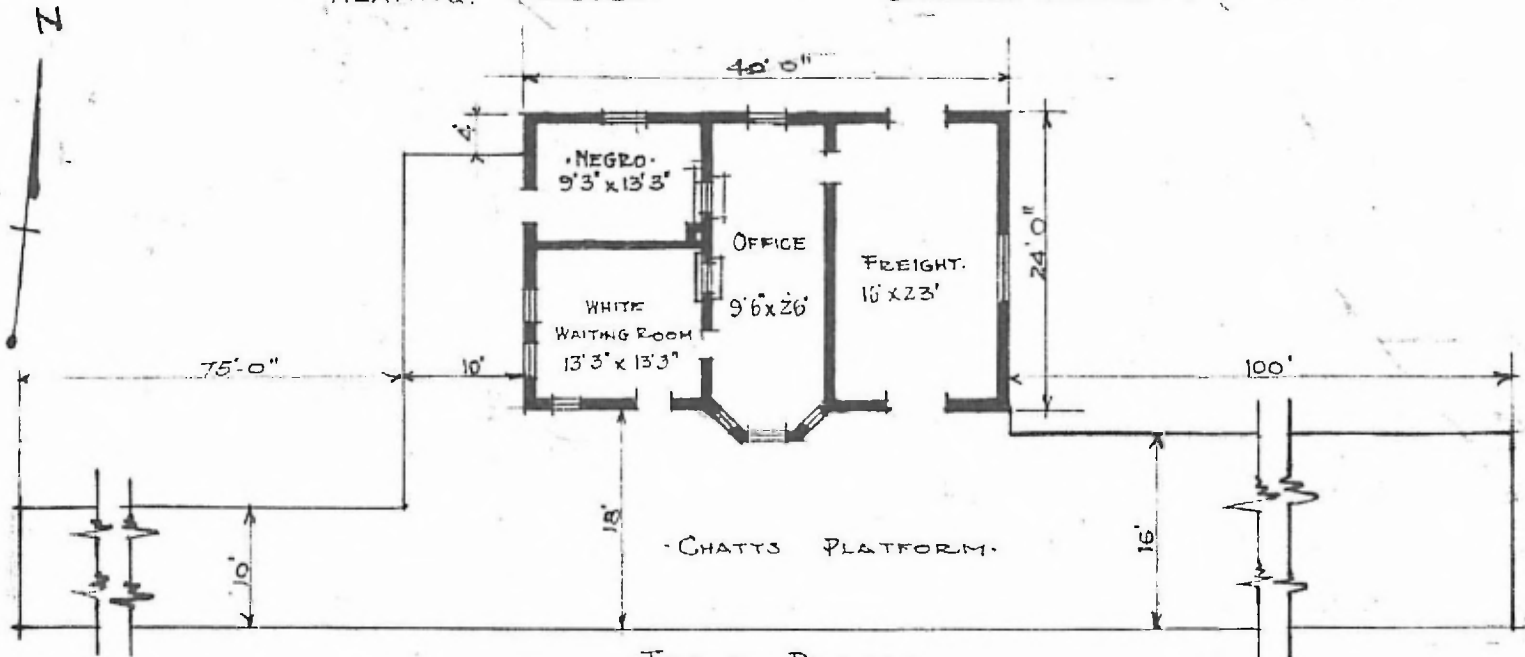


ERECTED. 1910.
 TYPE. FRAME. STD#2
 FOUNDATION. CONCRETE.
 WALLS. 2"X6"
 ROOF { TYPE. HIP SHINGLES
 PITCH. 1/3.
 HEATING. STOVES.

FLOOR. 2 1/4" MAPLE.
 FINISH { INSIDE. 5/4 X 3 1/4" V. JOINT CEILING.
 OUTSIDE. 1" X 6" DROP SIDING.
 CEILING HEIGHT. 11'4"
 LIGHTING. LAMPS.
 SANITARY FACILITIES. OUTSIDE TOILET.



FLOOR PLAN.
 SCALE 1/16" = 1'0"

SW - DIV. RED RIVER
 SUB. DIV. MUSKOGEE
 STA. NO. Y416

COMBINATION STATION AT
 PARK HILL OKLA.