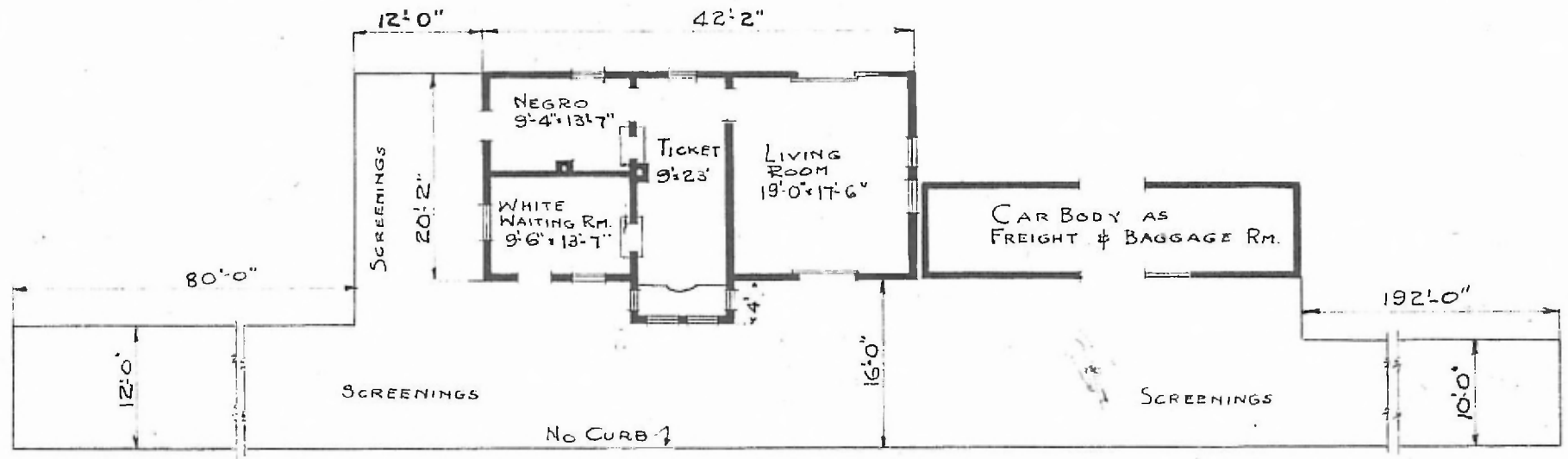


SW - DIV. RED RIVER  
SUBDIV. SHERMAN  
ST. NO. E-624

ERECTED 1903  
TYPE FRAME  
FOUNDATION PILE HEADS  
WALLS 2" x 6"  
ROOF { TYPE GABLE SHINGLES  
      PITCH 3/4  
HEATING STOVES

FLOOR 3/4" x 3 1/4" Y.P.  
FINISH { INSIDE 3/4" x 3 1/4" Bd. CEILING  
       { OUTSIDE BOARDS & BATT'S.  
CEILING HEIGHT 12'-0"  
LIGHTING LAMPS  
SANITARY FACILITIES OUTSIDE TOILETS.



FLOOR PLAN  
SCALE: 1/16" = 1'-0"



COMBINATION STATION AT  
PLATTER OKLA.

Nov. 4, 1915.