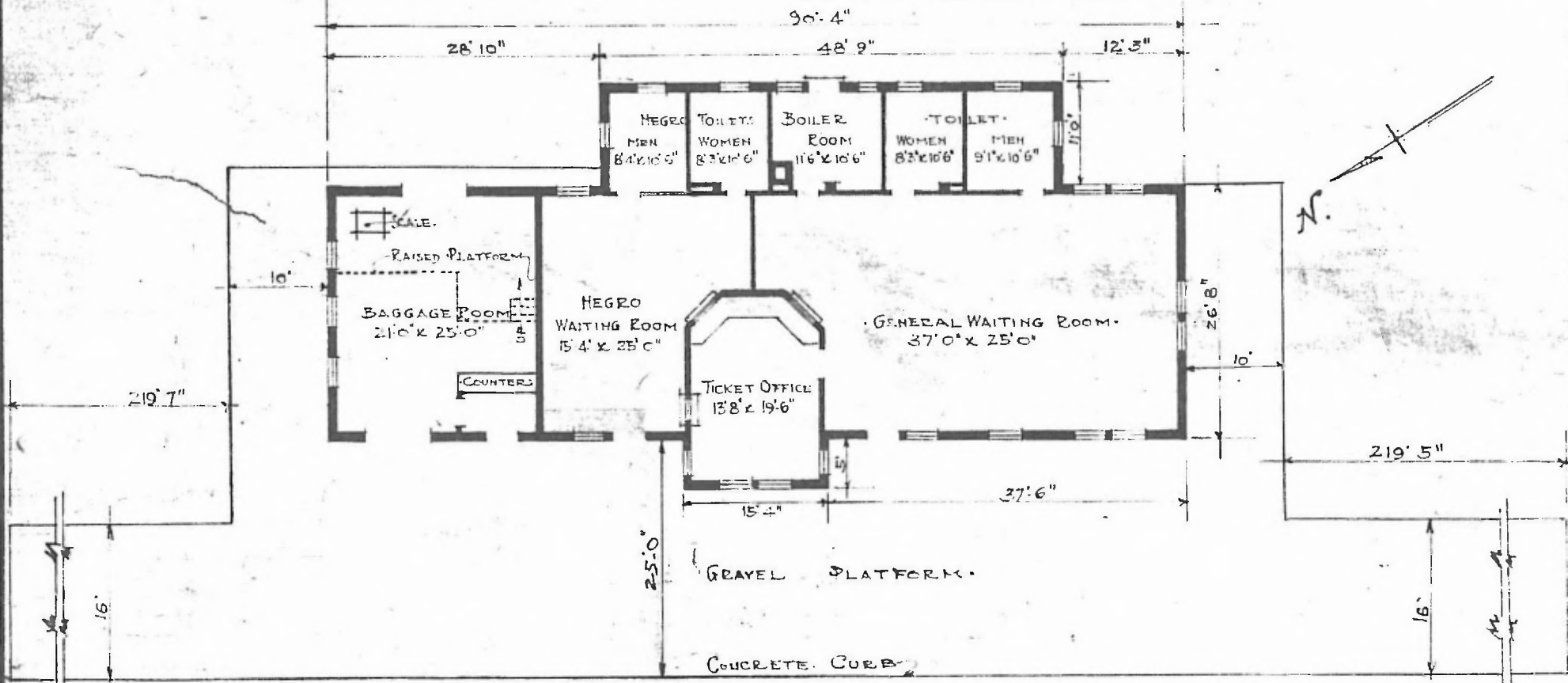


ERECTED. · 1915.
 TYPE. · STUCCO.
 FOUNDATION. · CONCRETE.
 WALLS. · 8" TILE.
 ROOF { TYPE. FLAT COMPN.
 PITCH.
 HEATING. · HOT WATER.

FLOOR. · CONCRETE.
 FINISH { INSIDE. · PLASTER;
 OUTSIDE. · CEMENT STUCCO.
 CEILING HEIGHT. 11'6"
 LIGHTING. ELECTRIC.
 SANITARY FACILITIES. · INSIDE TOILET.

CENTRAL DIV.



· FLOOR PLAN ·
 · SCALE 1/16" = 1'0" ·

· PASSENGER · STATION · AT ·
 · POTEAU · OKLA. ·

· JAN. 14. 1915. ·