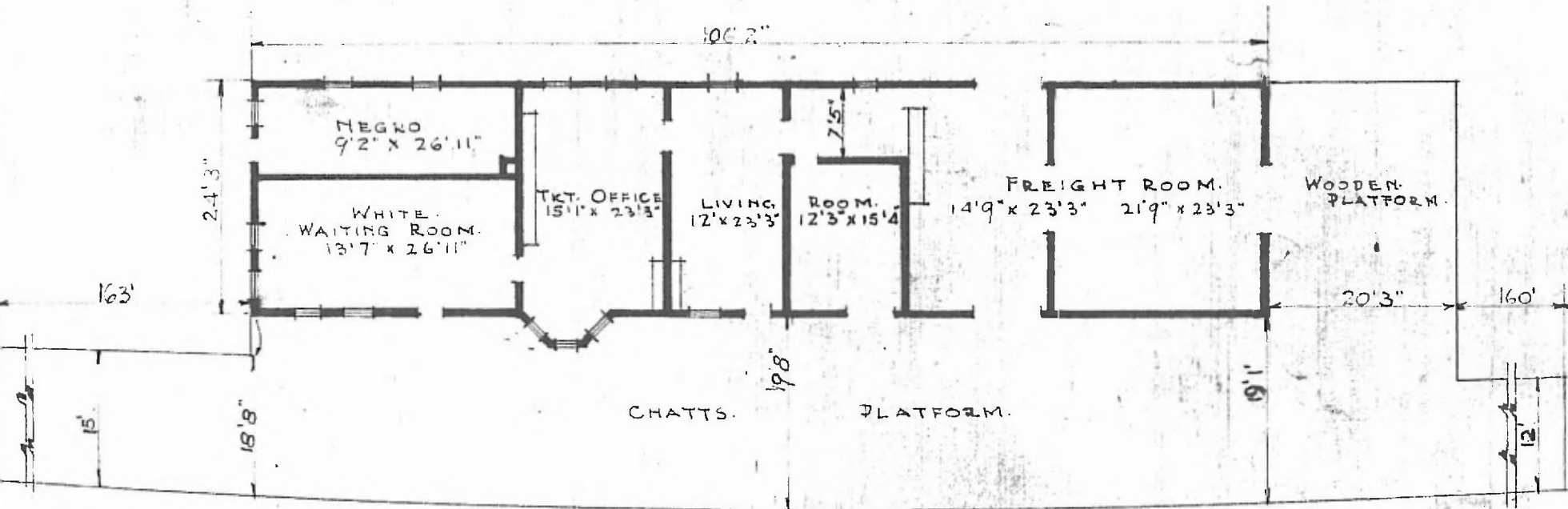


4

ERECTED. 1910  
 TYPE: FRAME.  
 FOUNDATION: PILE HEADS  
 WALLS: 2x6.  
 ROOF {TYPE: HIP SHINGLE.  
 PITCH 1/2.  
 HEATING: STOVES.

FLOOR: 2 1/4" MAPLE.  
 FINISH {INSIDE: 3/4 x 3/4 BD CEILING.  
 OUTSIDE: 1" x 6" DROP SIDING.  
 CEILING HEIGHTS: 11' 3"  
 LIGHTING: NAT. GAS  
 SANITARY FACILITIES: OUTSIDE TOILETS.

SW DIV  
 Creek Sub  
 E 462



FLOOR PLAN.  
 SCALE 1/16" = 1'0"

COMBINATION STATION AT  
 PRESTON OKLA.



SEPT. 17, 1915