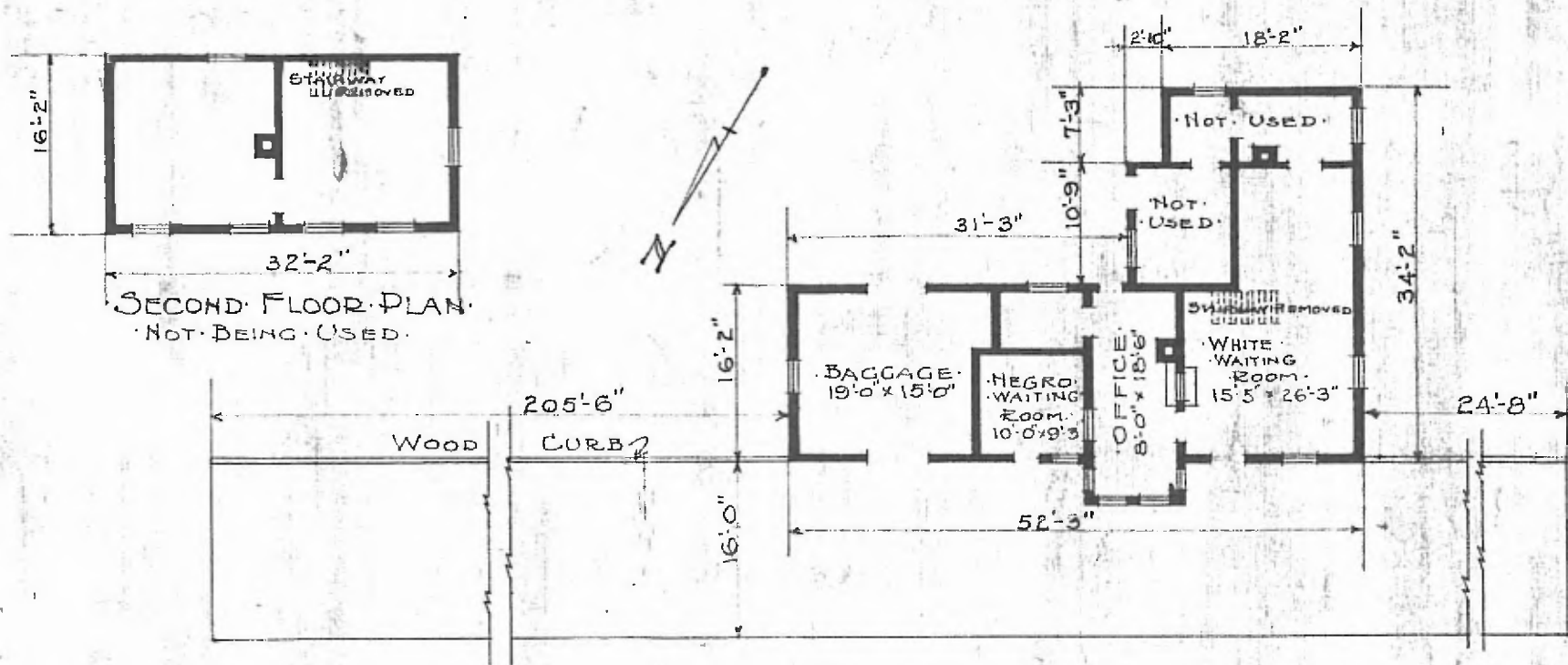


ERECTED 1900
 TYPE FRAME
 FOUNDATION PILE HEADS
 WALLS 2x4
 ROOF TYPE: GABLE, SHINGLES
 PITCH: 1/4
 HEATING STOVES

FLOOR 3/4 x 3/4 Y.P.
 FINISH: INSIDE 3/4 x 3/4 M & D, OUTSIDE 3/4 x 5/4 DROP SIDING
 CEILING HEIGHT 9'-4"
 LIGHTING OIL LAMPS
 SANITARY FACILITIES OUTSIDE TOILET

DIV. SOUTHWESTERN
 SUB. DIV. CHEROKEE
 STA. NO. G428

55



SECOND FLOOR PLAN
 NOT BEING USED

FLOOR PLAN
 SCALE 1/16" = 1'-0"

PASSENGER STATION
 RED FORK OKLA.