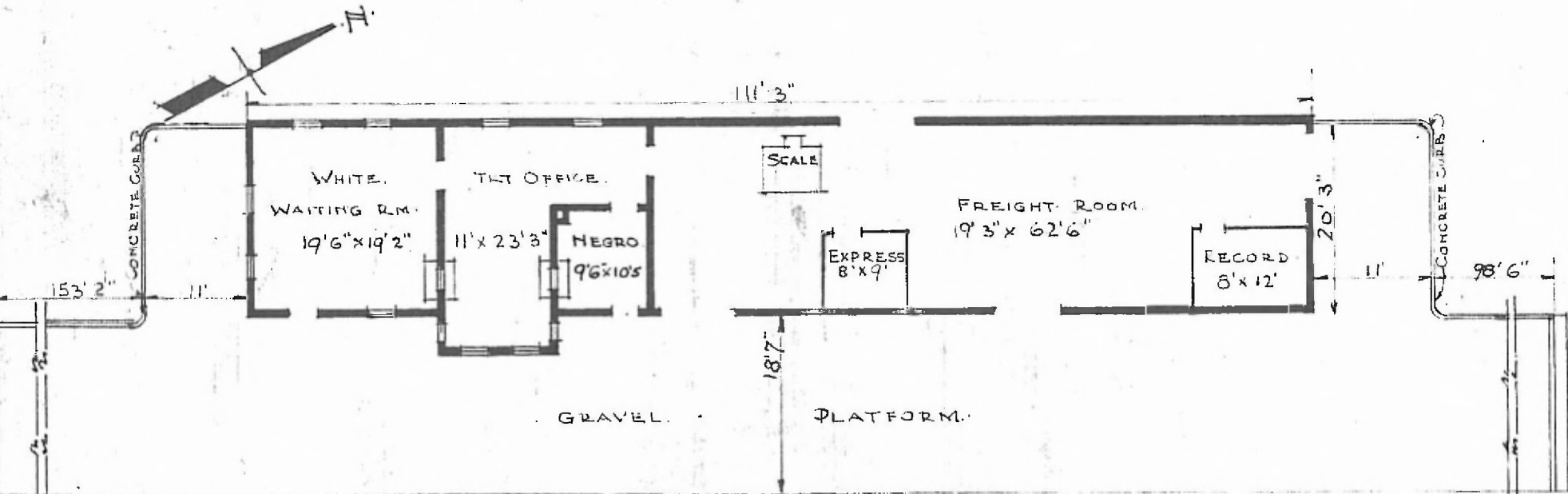


SW - DIV. RED RIVER  
SUBDIVISION SHERMAN  
STA. NO E 564

ERECTED: 1900.  
TYPE: FRAME.  
FOUNDATION: PILE HEADS.  
WALLS: 2x6"  
ROOF { TYPE: GABLE SHINGLE.  
PITCH: 1/3.  
HEATING: STOVES.

FLOOR: 3/4" E 5/4" X PINE.  
FINISH { INSIDE: 3/4" B.D. CEILING.  
OUTSIDE: BOARDS & BATTIS.  
CEILING HEIGHTS: 11'9" FAT 13'2".  
LIGHTING: LAMPS.  
SANITARY FACILITIES: OUTSIDE TOILETS.



FLOOR PLAN.  
SCALE 1/4" = 1'0"

COMBINATION STATION AT  
ROFF OKLA.

SEPT. 30. 1915.