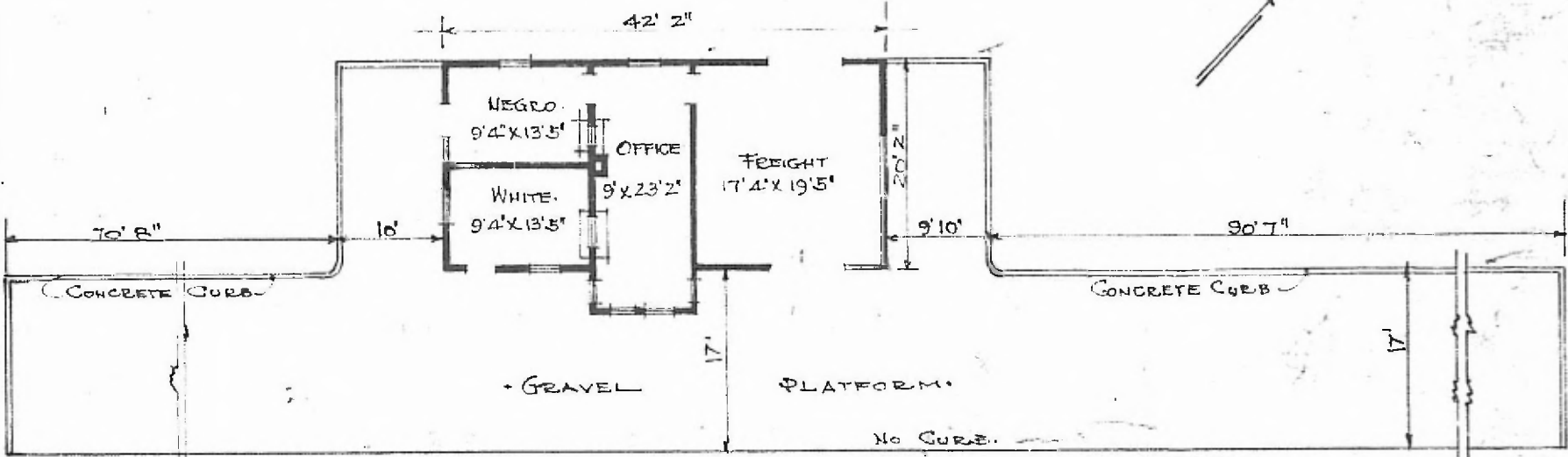
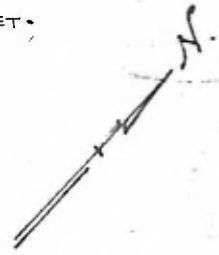


ERECTED. • 1902.
 TYPE. • FRAME.
 FOUNDATION. • PILE HEADS.
 WALLS.
 ROOF { TYPE. GABLE. SHINGLE.
 PITCH. 1/3
 HEATING. • STOVES.

FLOOR. 2 1/4" X 3 1/4" Y. PINE.
 INSIDE. PD. CEILING.
 FINISH { OUTSIDE • BOARD & BATT.
 CEILING HEIGHT. 12' 0"
 LIGHTING. • LAMPS.
 SANITARY FACILITIES. • OUTSIDE TOILET.



FLOOR PLAN.
 SCALE 1/16" = 1' 0"

DIV. CENTRAL
 SUB. DIV. ARKINDA
 STA. NO. W 568

COMBINATION STATION AT
 SAWYER, OKLA.

JUNE 15, 1915

1