

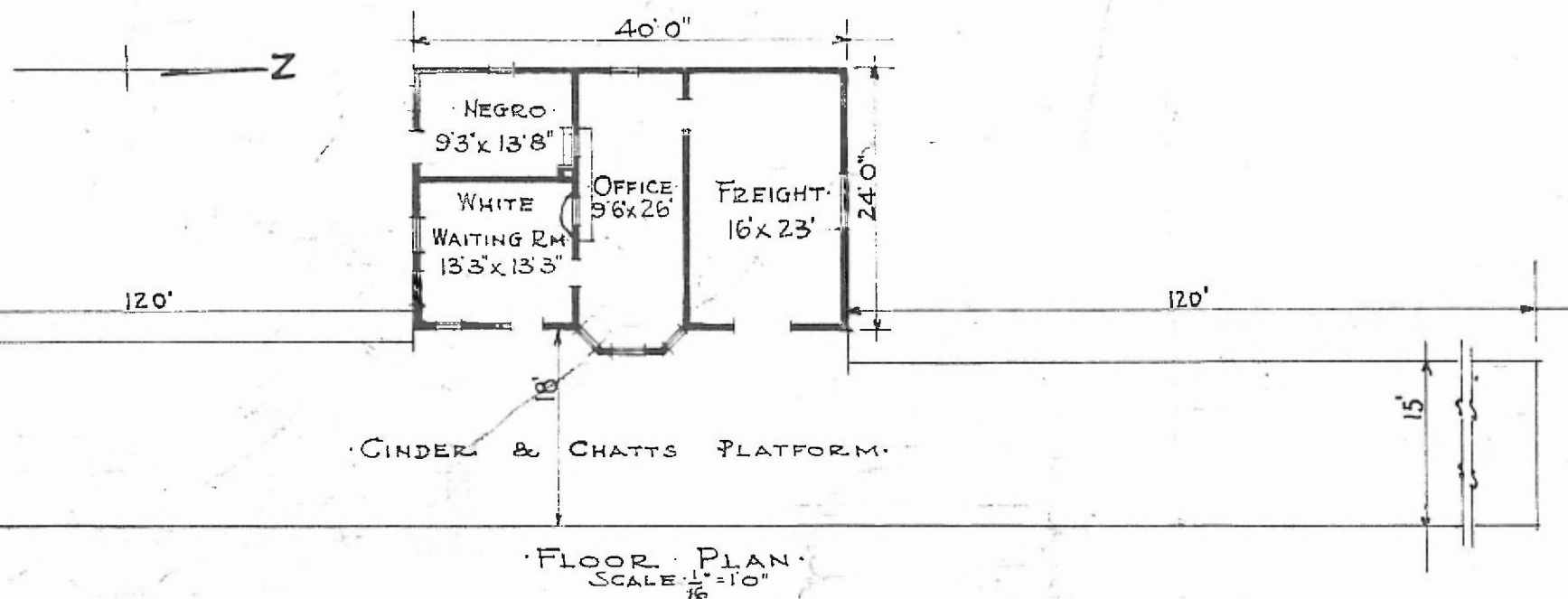
6

ERECTED. 1909.
 TYPE. FRAME. STD. #2.
 FOUNDATION. CONCRETE.
 WALLS. 2'x6"
 ROOF { TYPE. HIP. SHINGLES
 PITCH. 1/3
 HEATING. STOVES.

FLOOR: 2 1/4" MAPLE.
 FINISH { INSIDE. 3/4"x3 1/4" V. JOINT.
 OUTSIDE. 1"x6" DROP SIDING
 CEILING HEIGHT. 11'3"
 LIGHTING. LAMPS.
 SANITARY FACILITIES. OUTSIDE TOILETS.

SW. DIV
 Creek Sep

E 476



COMBINATION STATION AT
 SCHULTER OKLA.

SEPT. 18. 1915.

P.