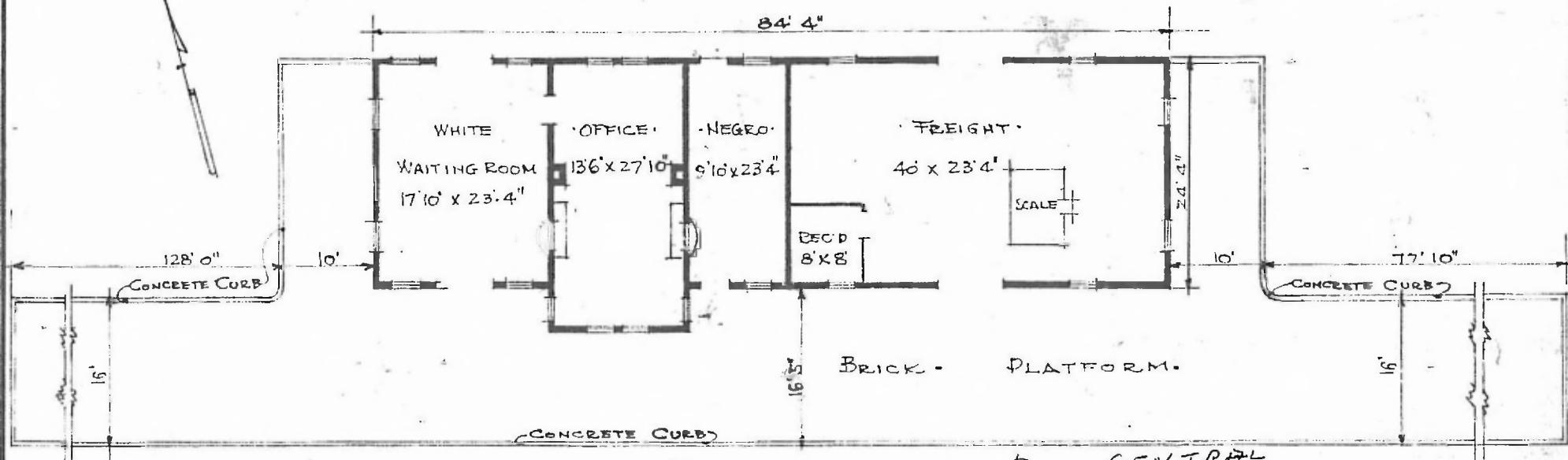


ERECTED. ·1912·  
 TYPE. ·FRAME·  
 FOUNDATION. ·CONCRETE·  
 WALLS. 2"X6"  
 ROOF { TYPE. HIP SHINGLES.  
 PITCH. 1/3.  
 HEATING. ·STOVES·

FLOOR. MAPLE.  
 FINISH { INSIDE. V. JOINT.  
 OUTSIDE. 1/2"X3 1/2" BEV. SIDING.  
 CEILING HEIGHT. 12'0"  
 LIGHTING. ·LAMPS·  
 SANITARY FACILITIES. ·OUTSIDE TOILET·

·N·



· FLOOR PLAN ·  
 · SCALE · 1/16" = 1'0"

DIV. CENTRAL  
 SUB. DIV. ARDMORE  
 STA. NO. V-570

· COMBINATION · STATION · AT ·  
 · SOPER · OKLA. ·

JUNE · 3 · 1915