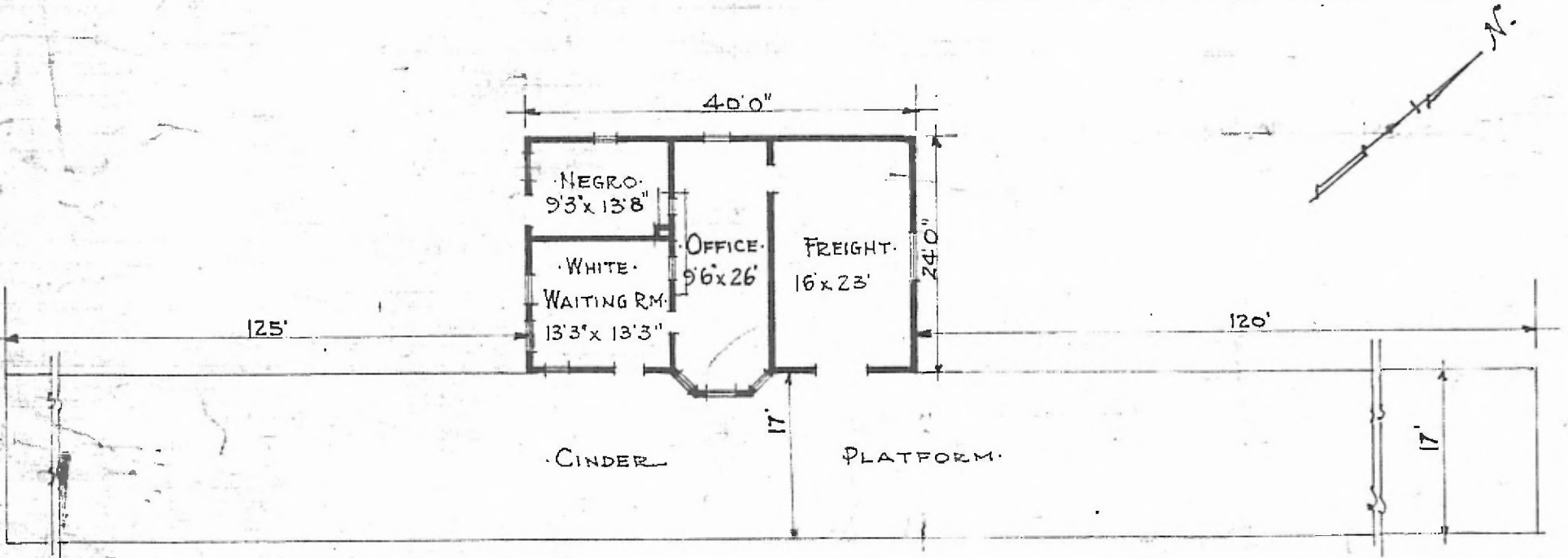


SW  
Creek

L-525

ERECTED. 1909.  
 TYPE. FRAME. STD. #2.  
 FOUNDATION. CONCRETE.  
 WALLS. 2" x 6"  
 ROOF { TYPE. HIP. SHINGLES.  
 PITCH. 1/2  
 HEATING. STOVES.

FLOOR. 2 1/4" MAPLE.  
 FINISH { INSIDE. 3 1/2" BD. CEILING  
 OUTSIDE. 1x6" DROP SIDING.  
 CEILING HEIGHT. 11'3"  
 LIGHTING. LAMPS.  
 SANITARY FACILITIES. OUTSIDE TOILET.



FLOOR PLAN.  
 SCALE 1/16" = 1'0"

COMBINATION STATION AT  
 SPAULDING OKLA.

*Southwestern*

SEP. 23. 1915.