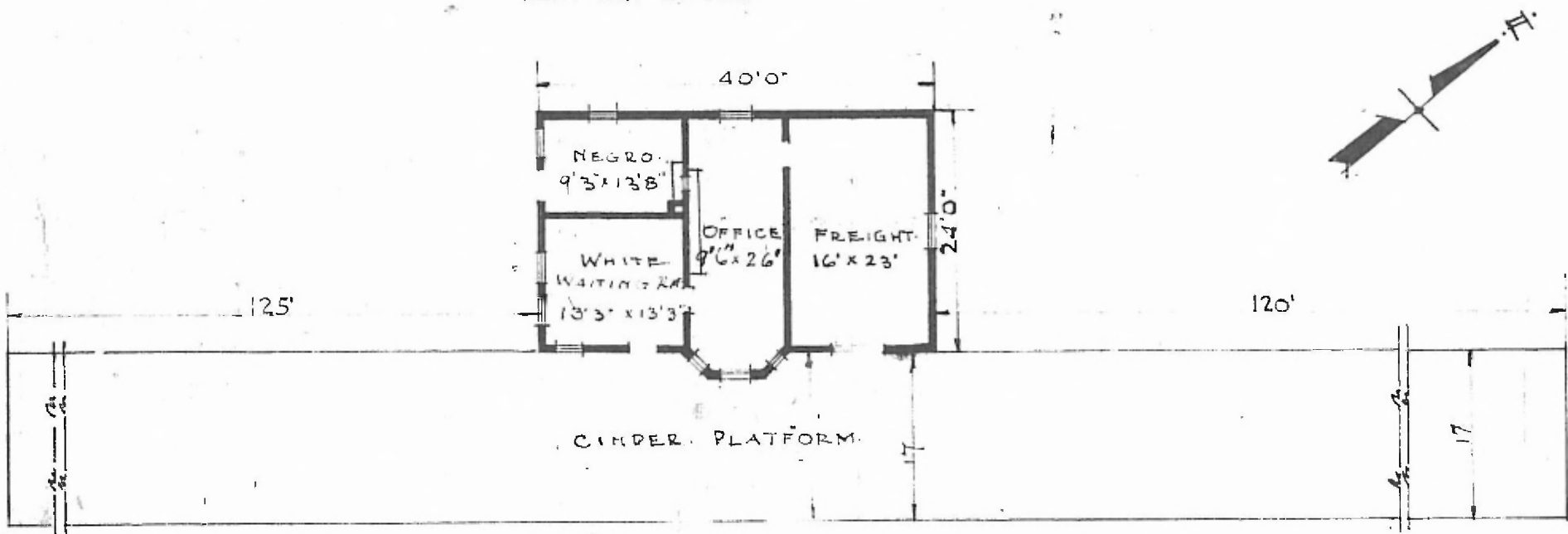


12.

ERECTED 1909
 TYPE. FRAME. STD. 2.
 FOUNDATION. CONCRETE.
 WALL. 2"X6"
 ROOF { TYPE. HIP. SHINGLE.
 PITCH 1/2
 HEATING. STOVES.

FLOOR. 2 1/4 MAPLE. SW DIV
 FINISH. { INSIDE. 3 1/4 BD. CEILING. Outside SW
 OUTSIDE 1X6 DROP SIDING
 CEILING HEIGHTS. 11' 3"
 LIGHTING. LAMPS. E 525
 -SANITARY FACILITIES. OUTSIDE TOILETS.



FLOOR PLAN.
 SCALE 1/16" = 1'0"

COMBINATION STATION AT
 SPAULDING. OKLA.

SEPT. 23-1915.