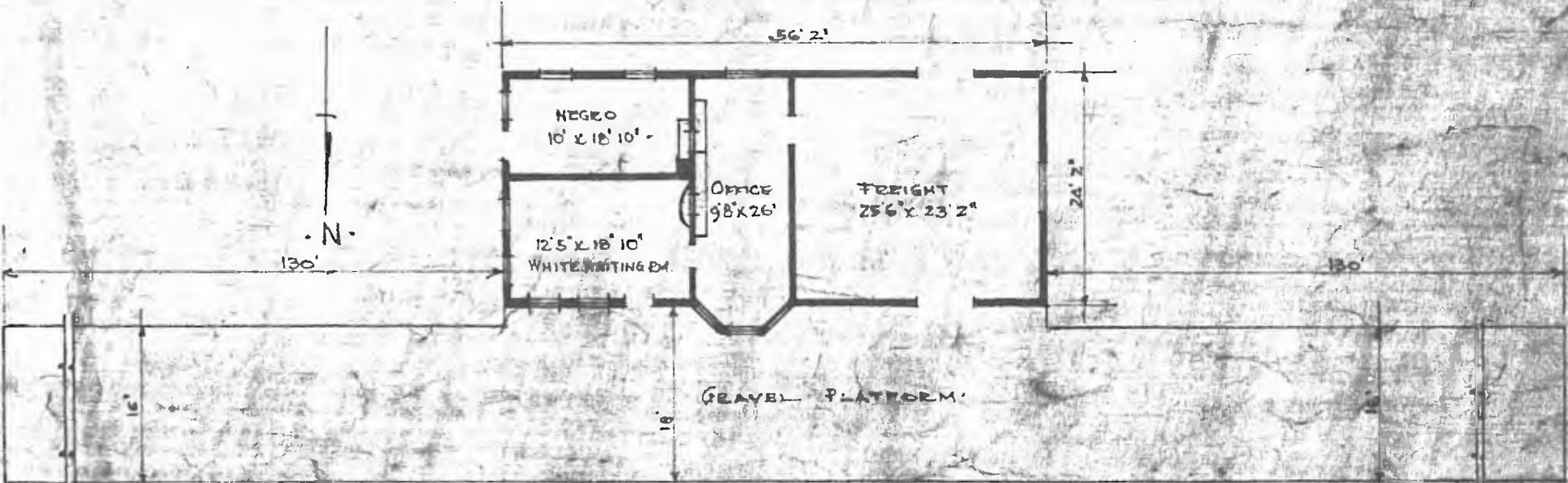


ERECTED. 1909.
 TYPE. FRAME.
 FOUNDATION. CONCRETE.
 WALLS. 2" X 6"
 ROOF { TYPE. HIP.
 PITCH. 1/3.
 HEATING. STOVES.

FLOOR. MAPLE.
 FINISH { INSIDE. 3/4" X 3 1/2" V. JOINT.
 OUTSIDE. 1/4" X 4" DROP SIDING - 112.
 CEILING HEIGHT. 11' 10"
 LIGHTING. LAMPS.
 SANITARY FACILITIES. OUTSIDE TOILET.



FLOOR PLAN
 SCALE 1/16" = 1' 0"

DIV. CENTRAL
 SUB. DIV. ARTHUR
 ST. No. 514

COMBINATION STATION AT
 STANLEY, OKLA.

MAY 31 1915