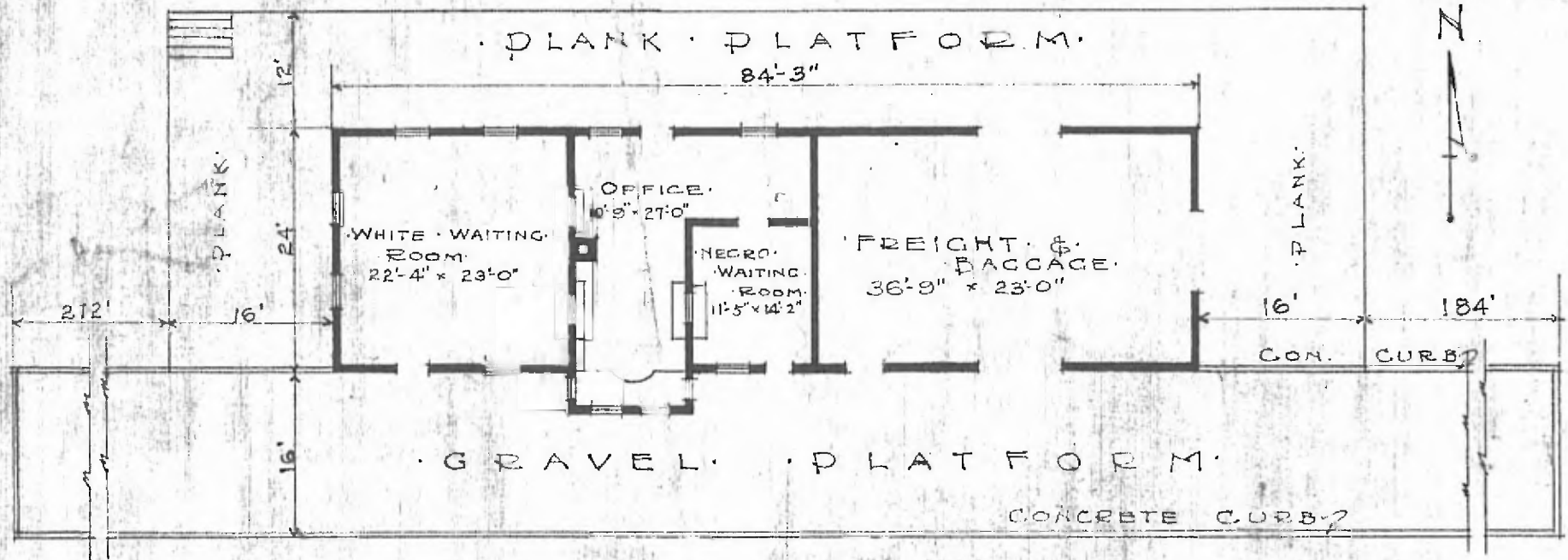


62

DIV. SOUTHWESTERN  
SUB. DIV. OKLAHOMA  
STATION NO. G 478

- ERECTED: 1898
- TYPE: FRAME
- FOUNDATION: PILE HEADS
- WALLS: 2"x6"
- ROOF: TYPE: GABLE, SHINGLES  
PITCH: 1/3
- HEATING: STOVES
- FLOOR: 3/4" x 3/4" Y.P.
- FINISH: (INSIDE: 3/4" x 3/4" M. & B. (OUTSIDE: BOARDS & BATTENS.
- CEILING HEIGHT: 13'10"
- LIGHTING: ELECTRIC
- SANITARY FACILITIES: OUTSIDE TOILET.



FLOOR PLAN  
SCALE 1/16" = 1'-0"

COMBINATION STATION  
STROUD OKLA.

JULY 13, 1916.